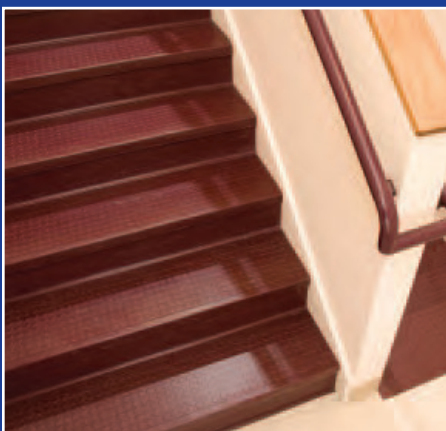


- **STAIR TREADS**
- **IMPACT PROTECTION**

- **ENTRANCE MATTING**
- **SPECIALTY MATTING**



Raised Pattern Rubber
Stair Treads 2-3

Smooth Rubber Treads /
Rubber Cove Risers /
Rubber Tile 4

Aluminum Stair Treads &
Nosing / Fiberglass Step
Covers / Panels 5

Vinyl Stair Treads / Cove
Risers / Landing Tile /
Nosing 6-7

Impact Protection (Wall
Guards, Handrails,
Corner Guards) 8-9

Aluminum Mat Frames. 10

Entrance Mats, Matting
& Tile 11-15

Vinyl Back & Rubber
Back Carpet Mats &
Matting 16-18

40 Mil LVT 19

Anti-Fatigue Mats &
Matting. 20

Specialty Mats & Matting. 21

Weight Room Mats, Matting
& Interlocking Tile 22

Rubber & Vinyl Runner
Matting. 23

Specialty Mats & Matting 24

Product colors are reproduced as accurately as possible in this catalog. Make final color selection from actual samples.

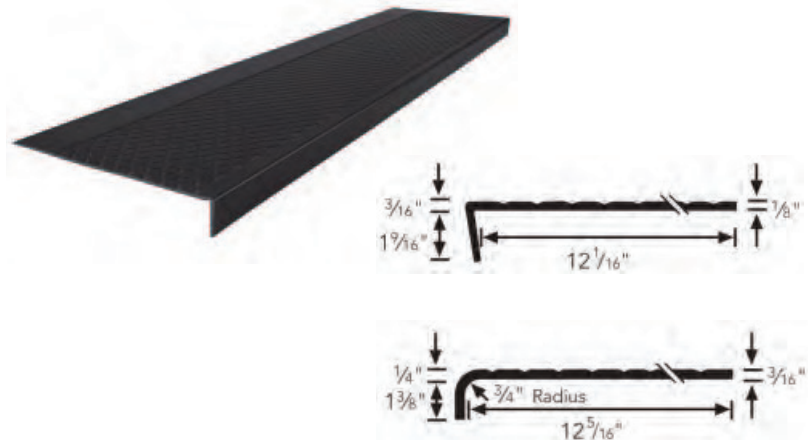


MUSSON RUBBER CO.

P.O. Box 7038 • Akron, Ohio 44306 • 800-321-2381 • Fax 330-773-3254
info@mussonrubber.com • www.mussonrubber.com

RUBBER DESIGN STAIR TREAD SYSTEMS

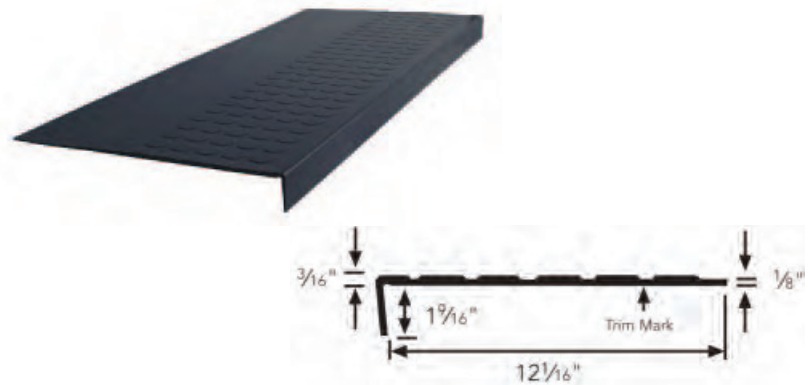
No. 620D



A raised diamond pattern rubber stair tread for use in commercial, industrial or institutional buildings. The diamond design surface is 8-1/4" deep with a 3" smooth back. Install with Musson RCM510 Acrylic Adhesive, No. 400 Neoprene Contact Adhesive, or No. 300 Water-Based Contact Adhesive. No. 620D treads are available in either square nose or curve nose design; square nose treads are 12-1/16" deep with a 1-9/16" long nose and curve nose treads are 12-5/16" deep with a 1-3/8" long nose.

Select from standard lengths of 36", 42", 48", 54", 60", 66", 72", 78", 84", 90", 96", 102" or 108"; treads over 72" long are available in square nose only. Choose from standard marbled and solid colors as shown on page 3. No. 620D treads are available with 2-3/4" abrasive strips (No. GS620D) or a single 2" abrasive strip (No. GS620DVI); abrasive strips are available in Black (standard), Safety Yellow, Beige, Gray or Brown.

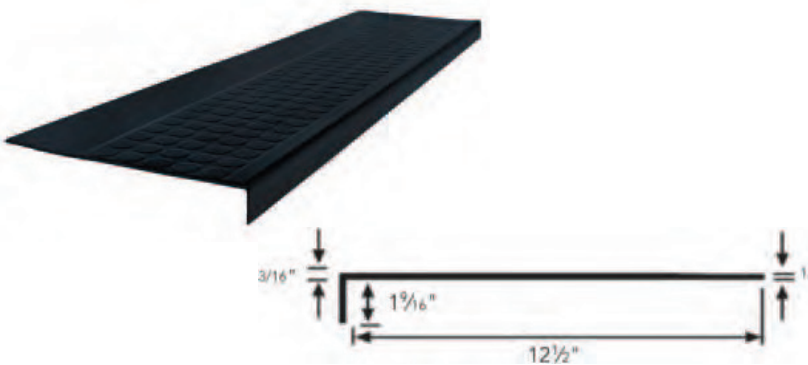
No. 780R



A high-profile pattern rubber stair tread for use in commercial, industrial or institutional buildings. The disc design surface is 7" deep with a 4-1/4" smooth back. Install with Musson RCM510 Acrylic Adhesive, No. 400 Neoprene Contact Adhesive, or No. 300 Water-Based Contact Adhesive. No. 780R treads are available in square nose only; treads are 12-1/16" deep with a 1-9/16" long nose.

Select from standard lengths of 36", 42", 48", 54", 60", 66", 72", 78", 84", 90", 96", 102" or 108". Choose from standard marbled and solid colors as shown on page 3. No. 780R treads are available with 2-3/4" abrasive strips (No. GS780R) or a single 2" abrasive strip (No. GS780RVI); abrasive strips are available in Black (standard), Safety Yellow, Beige, Gray or Brown.

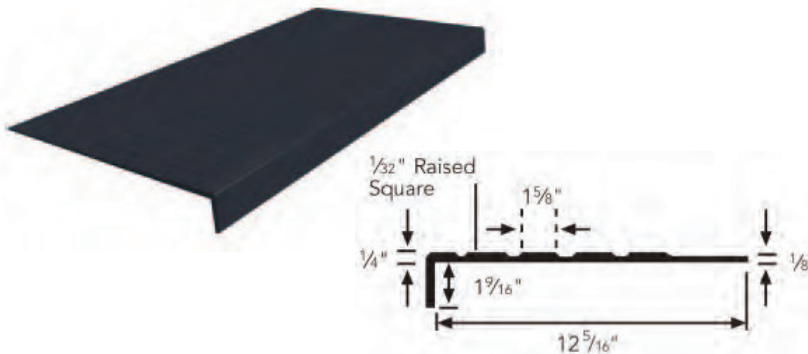
No. 820R



A low-profile pattern rubber stair tread for use in commercial, industrial or institutional buildings. The disc design surface is 7" deep with a 4-1/4" smooth back. Install with Musson RCM510 Acrylic Adhesive, No. 400 Neoprene Contact Adhesive, or No. 300 Water-Based Contact Adhesive. No. 820R treads are available in square nose only; treads are 12-1/2" deep with a 1-9/16" long nose.

Select from standard lengths of 36", 42", 48", 54", 60", 66", or 72". Choose from standard marbled and solid colors as shown on page 3. No. 820R treads are available with 2-3/4" abrasive strips (No. GS820R) or a single 2" abrasive strip (No. GS820RVI); abrasive strips are available in Black (standard), Safety Yellow, Beige, Gray or Brown.

No. 520S

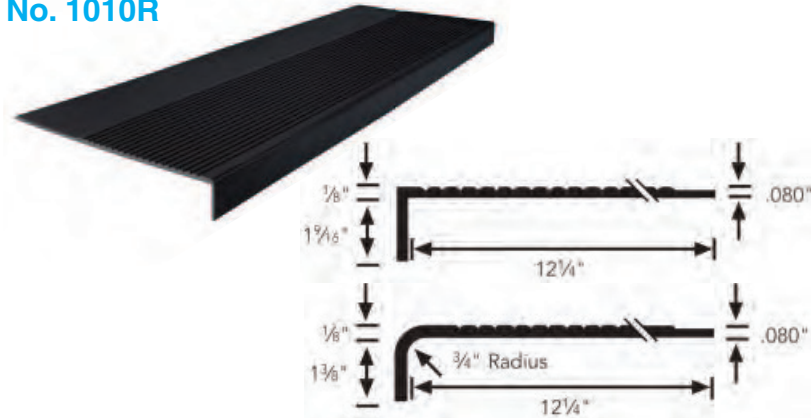


A raised square pattern rubber stair tread for use in commercial, industrial or institutional buildings. The square design surface is 7-3/4" deep with a 3-3/16" smooth back. Install with Musson RCM510 Acrylic Adhesive, No. 400 Neoprene Contact Adhesive, or No. 300 Water-Based Contact Adhesive. No. 520R treads are available in square nose only; treads are 12-5/16" deep with a 1-9/16" long nose.

Select from standard lengths of 36", 42", 48", 54", 60", 66", 72", 78", 84", 90", 96", 102" or 108". Choose from standard marbled and solid colors as shown on page 3. No. 520S treads are available with 2-3/4" abrasive strips (No. GS520S) or a single 2" abrasive strip (No. GS520SVI); abrasive strips are available in Black (standard), Safety Yellow, Beige, Gray or Brown.

RUBBER DESIGN STAIR TREAD SYSTEMS

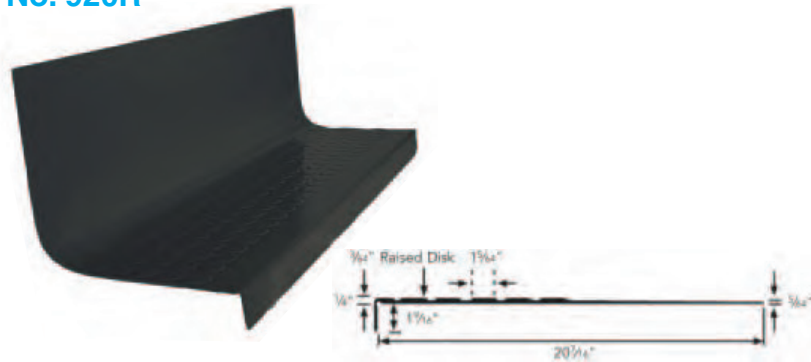
No. 1010R



A raised-rib pattern rubber stair tread for light commercial use. The rib pattern surface is 6-3/4" deep with a 4-3/8" smooth back. Install with Musson RCM510 Acrylic Adhesive, No. 400 Neoprene Contact Adhesive, or No. 300 Water-Based Contact Adhesive. No. 1010R treads are available in square nose only; treads are 12-1/2" deep with a 1-9/16" long nose.

Select from standard lengths of 36", 42", 48", 54", 60", 66", or 72". Choose from standard marbled and solid colors as shown below.

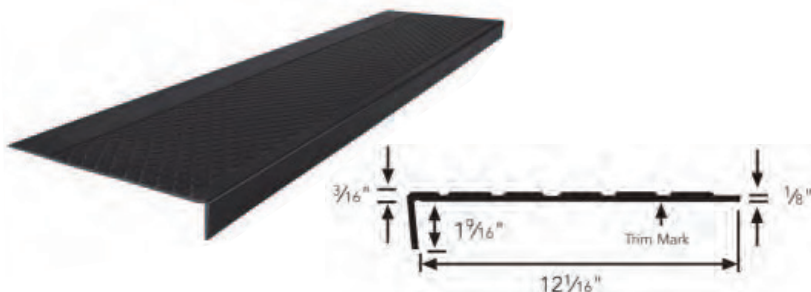
No. 920R



A high-profile pattern one-piece rubber stair tread/riser for use in commercial, industrial or institutional buildings. The disc design surface is 7" deep with a 12-1/2" smooth back/riser surface. Install with Musson RCM510 Acrylic Adhesive, No. 400 Neoprene Contact Adhesive, or No. 300 Water-Based Contact Adhesive. No. 920R treads are available in square nose only; treads are 12-1/16" deep with a 1-9/16" long nose.

Select from standard lengths of 36", 42", 48", 54", 60", 66", 72", 78", 84", 90", 96", 102" or 108". Choose from standard marbled and solid colors as shown below. No. 920R treads are available with 2-3/4" abrasive strips (No. GS920R) or a single 2" abrasive strip (No. GS920RVI); abrasive strips are available in Black (standard), Safety Yellow, Beige, Gray or Brown.

No. 630D



Our No. 630D Outdoor Rubber Stair treads are manufactured with a special compound for exterior applications. The raised diamond design surface is 8" deep with a 3" smooth back. Install with Musson No. 775 Epoxy Adhesive. No. 630D treads are available in square nose only; treads are 12" deep with a 1-9/16" long nose. No. 630D treads are the only rubber treads we recommend for exterior applications.

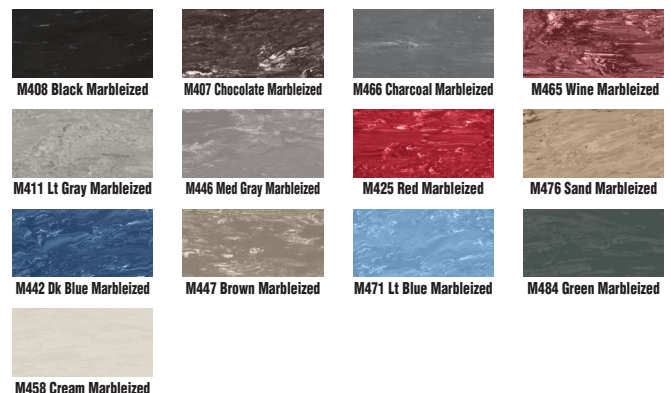
Select from standard lengths of 36", 42", 48", 54", 60", 66" or 72". Available in Plain Black only.

RUBBER TREADS, RISERS, AND TILE COLOR CHART

Solid Colors



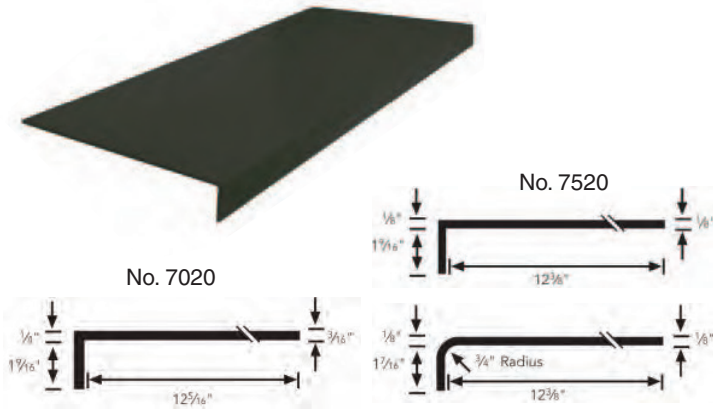
Marbleized Colors



Product colors are reproduced as accurately as possible. Make final color selection from actual samples.

SMOOTH RUBBER TREADS • COVE RISERS • LANDING TILE

SMOOTH FLAT SURFACE TREADS



No. 7520 is a smooth rubber stair tread for light commercial use. No. 7520 is 12-3/8" deep with either a 1-9/16" long square nose or 1-7/16" long curve nose. No. 7520 treads are available with 2-3/4" abrasive strips (No. 220) or a single 2" abrasive strip (No. 2520VI); abrasive strips are available in Black (standard), Safety Yellow, Beige, Gray or Brown.

No. 7020 is a smooth rubber stair tread for use in commercial, industrial or institutional buildings. No. 7020 is 12-5/16" deep with a 1-9/16" long square nose only. No. 7020 treads are available with 2-3/4" abrasive strips (No. 2020) or a single 2" abrasive strip (No. 2020VI); abrasive strips are available in Black (standard), Safety Yellow, Beige, Gray or Brown.

Select from standard lengths of 36", 42", 48", 54", 60", 66" or 72" for both styles. Choose from standard marbled and solid colors as shown on page 3.

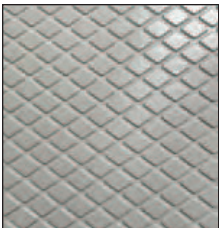
No. 605CR COVERED STAIR RISER



Complete the job by using our No. 605CR Cove Risers. Allows easier cleaning, is more attractive and reduces fitting procedures at the rear of the steps. Can be trimmed to fit in height and length.

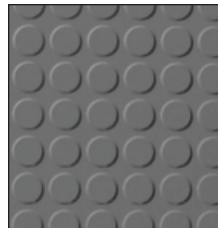
Select from standard lengths of 36", 42", 48", 54", 60", 66", 72", 78", 84", 90", 96", 102" or 108". Choose from standard marbled and solid colors as shown on page 3.

No. 644 DIAMOND DESIGN TILE (27" x 27")



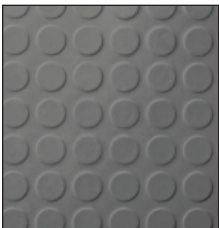
An ideal tile for stair landings, lobbies, aisles, ramps, elevators, and entryways. Diamond design pattern matches diamond design treads in color and pattern. Tiles are 3/16" thick x 27" x 27". Choose from standard marbled and solid colors as shown on page 3.

No. 782 HI-PROFILE DISC TILE (19.68" x 19.68")



An ideal tile for stair landings, lobbies, aisles, ramps, elevators, and entryways. High-profile disc design pattern matches high-profile disc design treads in color and pattern. Tiles are 1/8" thick x 19.68" x 19.68". Choose from standard marbled and solid colors as shown on page 3.

No. 882 LOW-PROFILE DISC TILE (19.68" x 19.68")



An ideal tile for stair landings, lobbies, aisles, ramps, elevators, and entryways. Low-profile disc design pattern matches low-profile disc design treads in color and pattern. Tiles are 1/8" thick x 19.68" x 19.68". Choose from standard marbled and solid colors as shown on page 3.

No. 552 SQUARE DESIGN TILE (19.68" x 19.68")



An ideal tile for stair landings, lobbies, aisles, ramps, elevators, and entryways. Square design pattern matches square design treads in color and pattern. Tiles are 1/8" thick x 19.68" x 19.68". Choose from standard marbled and solid colors as shown on page 3.

No. 1001T SMOOTH TILE (12" x 12")



Top quality smooth rubber floor tile; offers the durable, resilient, long-wearing, easy maintenance of rubber flooring. Tiles are 1/8" thick x 12" x 12". Choose from standard marbled and solid colors as shown on page 3.

ADHESIVES

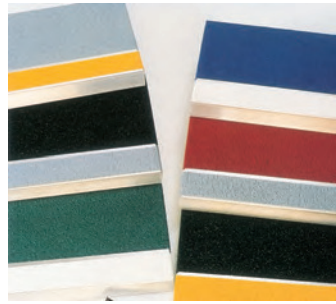
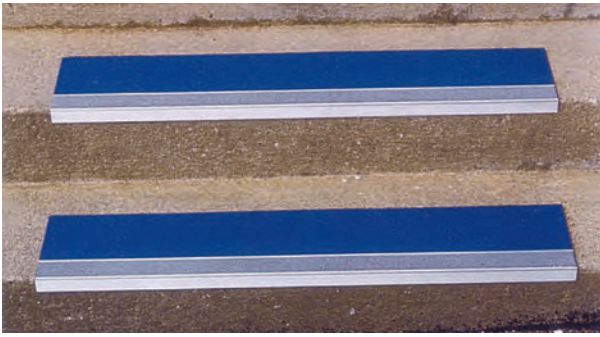
We carry a complete line of adhesives and nose caulks for installation of our stair treads, risers and tile.

Rubber and vinyl stair treads and cove risers can be installed with our No. RCM510 Acrylic Adhesive, No. 400 Neoprene Contact Adhesive or No. 300 Water-Based Contact Adhesive (No. 630D Rubber Outdoor Treads must be installed with our No. 775 Epoxy Adhesive). Landing tiles can be installed with our RCM510 Acrylic Adhesive or No. 775 Epoxy Adhesive.

Vinyl treads for commercial applications should also be installed using our No. 110 Epoxy Nose Caulk with our ECD18 or ECD26 Dual-Cartridge Dispenser.

GRIT-SURFACE ALUMINUM TREADS • GRIT COATED FIBERGLASS TREADS

GRIT-SURFACE ALUMINUM STAIR TREADS



Seven Standard Colors available:
Black, Brown, Blue, Gray,
Green, Red, Yellow

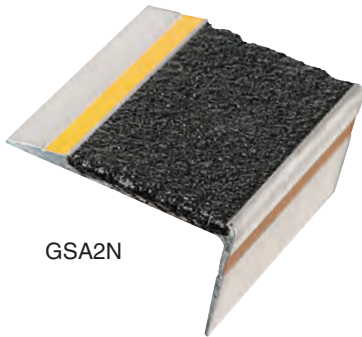
Install OUTDOORS or INDOORS on concrete, wood, treated lumber, slate or marble steps. Use for motels, schools, hotels, apartments, condos, hospitals, churches, cruise ships, amusement parks, etc. Offers anti-slip safety surface – protect new steps – renovate slippery, worn steps.

Diamond hard aluminum oxide abrasives combined with "space-age" polymeric binders are bonded to a heat treated high strength aluminum square nose stair tread. Treads are available 7-1/2", 9" or 11" deep; in one or two contrasting colors per tread. Flat pieces, 3-1/2" or 5-1/2" deep, can be used for ramps and other non-step applications or as a filler behind the 7-1/2" treads. Select one color for front insert and the same or a different color for back insert from seven standard abrasive colors of black, brown, blue, gray, green, red or yellow.

3-1/2" & 5-1/2" deep flat one color filler strips are available to butt to back of stair treads for deeper coverage or for use on flat surface or ramp installations.

Specifications: Furnish and install Musson Grit-Surface Aluminum Stair Treads, 3/16" thick; 7-1/2" (GSA75), 9" (GSA9) or 11" (GSA11) deep, as shown on drawings. Tread surface shall have aluminum oxide abrasives permanently bonded to a heat treated aluminum square nose tread. Select colors from standard grit colors of black, brown, blue, gray, green, red or yellow. Treads can be supplied with two countersunk holes every 12" for screw-down installation, or without holes for installation with our #400 Neoprene Contact Cement or #775 Epoxy Adhesive.

GRIT-SURFACE ALUMINUM NOSING



GSA2N

The GSA2N style is made from the same material as our Grit-Surface Aluminum Treads. The nosing is 2-1/2" deep with a 1-1/4" nose. The top surface has a 1-3/4" wide abrasive finish (available in Black, Brown, Blue, Gray, Green, Red or Yellow) with a 3/4" tapered aluminum back edge. Both the nose and tapered edge have a 1/4" wide reflective yellow strip for additional safety.

GSA2N is available solid (for glue-down applications) or with countersunk holes (for screw down applications) every 12".

GRIT-SURFACE FIBERGLASS STEP COVERS / PANELS



Grit-Surface Step Cover & Walkway Panels are coated with a proprietary blend of mineral abrasive epoxy grit and provide slip resistance, durability and a permanent anti-slip solution to both exterior and interior applications. Fiberglass step covers and panels are lightweight and ideal for use on structurally sound inclines, floors and steps in three distinct grit coating options: Heavy Duty, Medium and Fine. Can be provided with or without holes.

STEP COVERS – in Black, Yellow or Black with Yellow nose
 FSC3 – 3" deep with 1" square nose .9 lbs. each
 FSC9 – 9" deep with 1" square nose 1.5 lbs. each
 FSC11 – 11-3/4" deep with 2" square nose 2.3 lbs. each
 (FSC3 available in single color only)

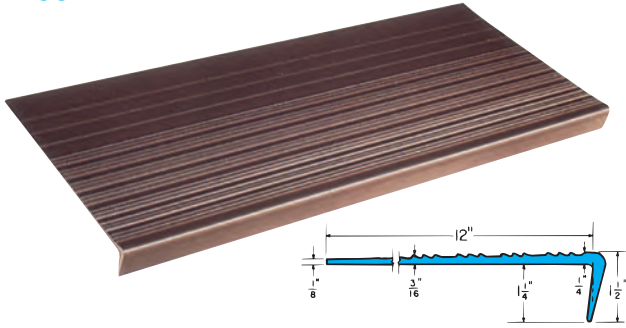
FLAT PANELS – in Black or Yellow
 GSFP CUST – Custom cut up to 48" x 96" 1.8 lbs/SF



VINYL STAIR TREADS

For commercial, industrial or institutional use. All Vinyl Stair Treads meet Federal Specs. ZZ-T-001237 (GSA-FSS).

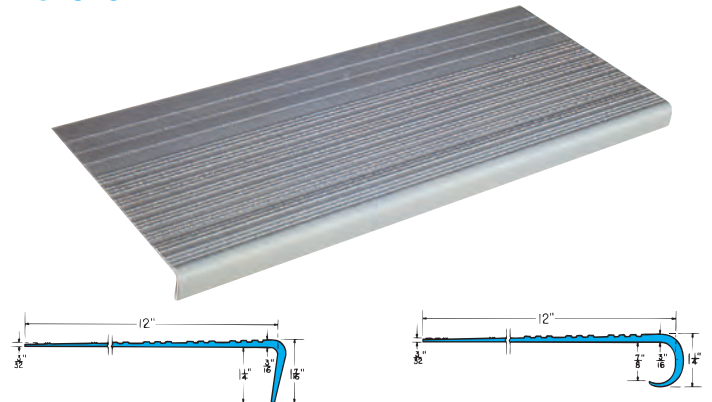
No. 400



Heavy gauge sharp-rib design vinyl tread for heaviest traffic; 1/4" thick at wear area, easily trimmed to cover and fit any stair step. Install over concrete, metal, wood, terrazzo. Extra heavy thickness at the front "wear area". Meets Fed. Specs. RR-T-650E Type B.

Specifications: Furnish and install No. 400 vinyl rib design stair treads by Musson Rubber; 1/4" thick, 12" deep; 1-1/4" square nose; contain no asbestos fiber; made of first quality homogenous vinyl, color throughout thickness; free from imperfections which might lessen serviceability. Select standard length of 24", 30", 36", 42", 48", 54", 60", 72", 84" or 96". Select standard solid color of Brown, Sand, Gray or Black.

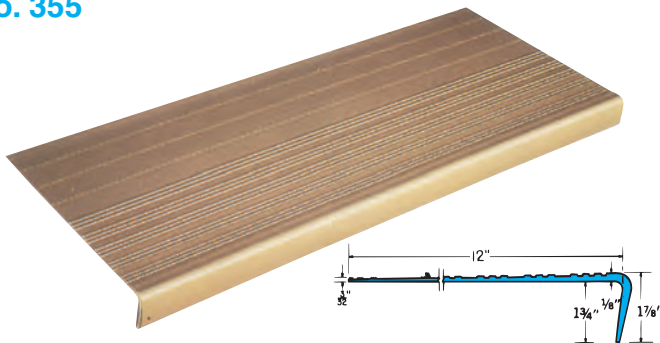
No. 375



Designed for use in apartments, urban renewal housing, housing for the elderly and housing projects. Lower initial cost, ease of installation and cleaning, and long service appeals to owner and builder. Extra thick at front; Meets Fed. Specs. RR-T-650E Type B.

Specifications: Furnish and install No. 375 vinyl rib design stair treads by Musson Rubber; 3/16" thick, 12" deep, 1-1/4" square (or curved) nose; contain no asbestos fiber; made of first quality homogenous vinyl, color throughout thickness; free from imperfections which might lessen serviceability. Select standard length of 18", 24", 30", 36", 42", 48", 54", 60", 72", 84" or 96". Select standard solid color of Brown, Sand, Gray, or Black.

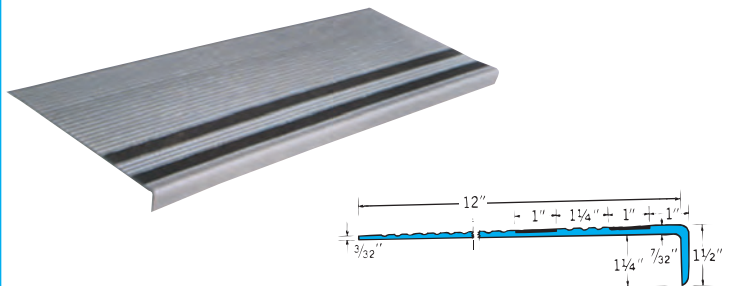
No. 355



Lower cost production for multi-family dwellings, apartment houses, low income housing. This tread with extra long nose is designed to use on a 2" x 12" plank step or molded concrete step. Heavier thickness at front "wear area". Treads are easy to install; flat rib surface is easy to clean. Meets Fed. Specs. RR-T-650E Type B.

Specifications: Furnish and install No. 355 vinyl rib design stair treads by Musson Rubber; 1/8" thick, 12" deep, with 1-3/4" extra long square nose; contain no asbestos fiber; made of first quality homogenous vinyl, color throughout thickness; free from imperfections which might lessen serviceability. Select standard length of 18", 24", 30", 36", 42", 48", 54", 60", 72", 84" or 96". Select standard solid color of Brown, Sand, Gray or Black.

No. GS365 GRIT-STRIP VINYL



The economical, nonporous, abrasion resistance and easy cleaning features of vinyl are now combined with the safety features of "Grit-Strips" into one stair tread. Can be used in all but the heaviest traffic areas. Meets Federal Specs. RR-T-650E Type B.

Specifications: Furnish and install No. GS365 Vinyl Grit-Strip rib design stair treads by Musson Rubber; 7/32" thick, 12" deep; 1-1/4" square nose; two black* 1" wide abrasive Grit-Strips inlaid in tread, 1" from front edge, spaced 1-1/4" apart; contains no asbestos fiber; made of first quality homogenous vinyl, color throughout thickness; free from imperfections which might lessen serviceability. Select standard length of 36", 42", 48", 54", 60", 72", 84" or 96". Select standard solid color of Brown or Gray. (Grit Strip also available in Gray, Brown, Beige, Safety Yellow & Safety Red)

VINYL COLORS
for treads & risers only



BROWN



SAND



GRAY



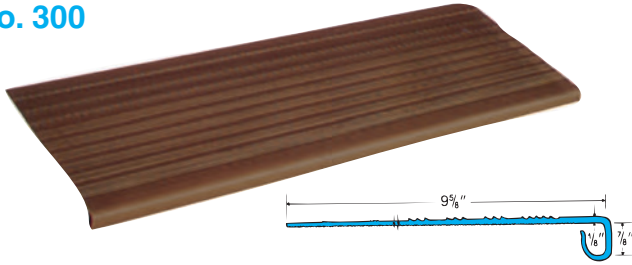
BLACK

All vinyl treads and risers can be installed with our No. 400 Neoprene Contact Adhesive, No. 300 Water-Based Adhesive, No. RCM510 Acrylic Adhesive or No. AT620-4 adhesive tape.

Product colors are reproduced as accurately as possible. Make final color selection from actual samples.

VINYL STAIR TREADS • COVE RISERS • TILE • NOSING

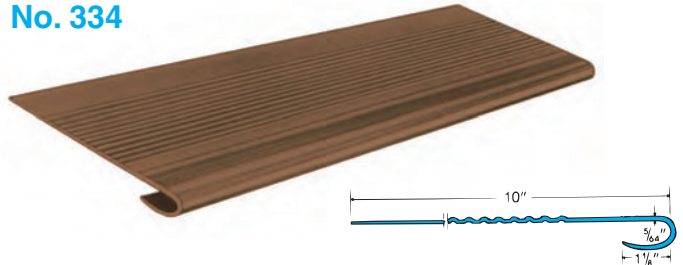
No. 300



Lowest cost protection for stairs of homes, duplexes and apartments. Features extra heavy snap-on nose that fits either square or curved nose wood steps that are between 3/4" and 1-1/8" thick.

Specifications: Furnish and install Musson #300 vinyl rib design stair treads, 1/8" thick, 9-5/8" deep in standard sizes as needed: 18", 24", 30", 36", 42", 48" or 72" wide. Select standard color of Brown or Black.

No. 334



Lightweight, economy gauge with a round rib design; curve-around nose fits round or square nose steps. Intended for residential use. Available in either Black or Brown; 5/16" thick, 10" deep in standard sizes of 18", 24", 36", 48", or 72" wide. Select standard color of Brown or Black.

No. 405CR COVE STAIR RISERS



Plain color cove risers match vinyl stair treads; or use a contrasting color riser with vinyl treads; easily trimmed in height and length; savings in installation are substantial; cove risers are same sizes as stair treads.

Specifications: Furnish and install No 405CR vinyl coved stair riser by Musson Rubber; 1/8" thick, 7" high with 5/8" toe; ribbed back. Select standard length of 18", 24", 30", 36", 42", 48", 54", 60", 72", 84" or 96". Select standard solid color of Brown, Sand, Gray or Black.

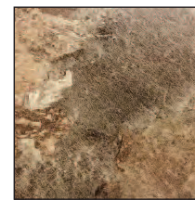
VINYL LANDING TILES



1/8" x 18" x 18" Granite Pattern tiles for use with our vinyl stair treads on landings and hallways. Available in Blackstone (for use with Black treads), Graystone (for use with Gray treads) and Brownstone (for use with Brown and Sand treads). Tile colors contrast with treads and risers to complete the staircase.



Blackstone



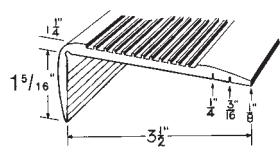
Brownstone



Graystone

Product colors are reproduced as accurately as possible. Make final color selection from actual samples.

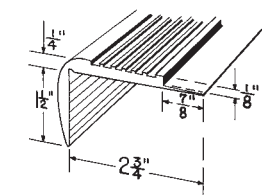
No. 101 VINYL BUTT TYPE NOSING



Ribbed Vinyl butt-type nosing for front edge of landings, stages, bowling lanes steps, platform-like floors and bar foot rests. Grooved cutting guides on back provide "cut-offs" to match flooring thickness. Standard 8' lengths; easily cut to size. Install with No. 400 Neoprene Contact Adhesive or No. 300 Water-Based Adhesive.

Available in Black or Brown. 3-1/2" deep with 1-5/16" long nose; cut nosing at proper guide to butt against 1/8" (or 3/16" or 1/4") flooring.

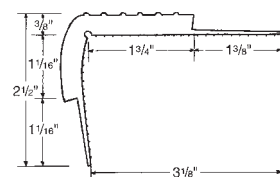
No. 105 VINYL LAP TYPE NOSING



Ribbed Vinyl lap-type nosing for front edge of landings, stages, bowling lanes steps, platform-like floors and bar foot rests. Form fitting adjusta-nose; has a 7/8" lip to allow 1/8" flooring to lap over the back edge. Standard 8' lengths; install with No. 400 Neoprene Contact Adhesive or No. 300 Water-Based Adhesive.

Available in Black or Brown. 2-3/4" deep with 1-1/2" long nose.

No. 140 VINYL CARPET NOSING



Improve safety and prevent worn carpet edges on steps; for new or renovated work. Butt 5/16" to 3/8" thick carpet against both the top and bottom lips of butt-type carpet nosing. Standard 8' lengths; easily cut to shorter lengths. Install with No. 400 Neoprene Contact Adhesive or No. 300 Water-Based Adhesive.

Available in Black or Brown. 3-1/8" deep; 2-1/2" nose depth; square adjusta-nose design.

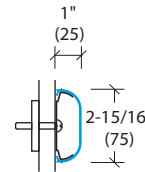
WALL PROTECTION

FLAT WALL GUARDS

Well suited to high traffic areas, flat profile wall guards offer maximum protection against wheelchair, cart and furniture impacts. The gently curved edges help prevent injury from accidental falls, discourage use as a footrest and eliminate litter and dust buildup. Available with smooth face (WG) or with parallel shallow grooves for a clean, contemporary architectural line (WGG). Available with or without rubber spacers for reveal or flush mounting.

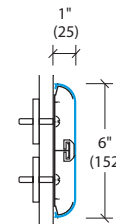
WG-3

The WG-3 Wall Guard is a 3" strip that is generally used at wainscot level or at top of cove base height. The vinyl covers are designed to flex upon impact. Vinyl material is .100" thick; aluminum is .062" thick.



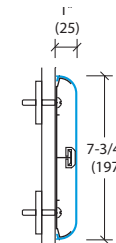
WG-6

The WG-6 Wall Guard is a 6" strip that approximates the width of handrail style BR-500 for coordination of color line throughout the facility. The vinyl covers are designed to flex upon impact and the continuous internal bumper absorbs impact as well. Vinyl material is .100" thick; aluminum is .080" thick.



WG-8

The WG-8 Wall Guard covers 7-3/4" of wall space for maximum protection and has a continuous aluminum retainer; flex action absorbs impact. The vinyl covers are designed to flex upon impact and the continuous internal bumper absorbs impact as well. Vinyl material is .100" thick; aluminum is .080" thick.

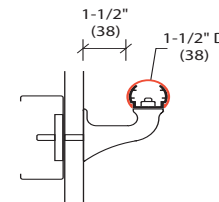


WG-6 & WG-8 available with easy Clip-On mounting system for quick, cost-effective installation.

CYLINDRICAL PROFILE HANDRAIL

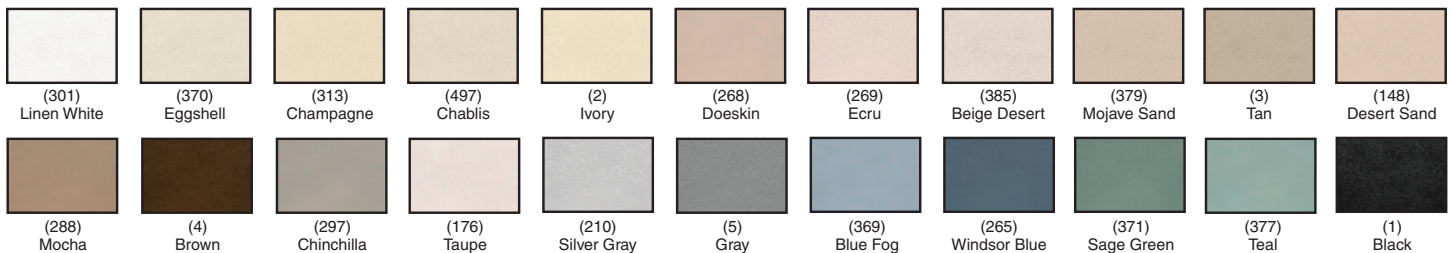
BR-1200

This handrail features a wrap-around cover of embossed rigid vinyl that encloses the aluminum retainer securely by means of a friction lock that prevents movement. The 1-1/2" diameter rail allows a full power grip, which has four times the force of the grip permitted by an incomplete-gasp or pinch-grip-style rail.



- Material thickness: vinyl .080", aluminum .100"

Wall Covering Color Selection



Product colors are reproduced as accurately as possible. Make final color selection from actual samples.

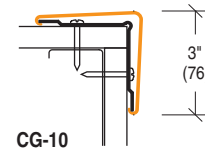
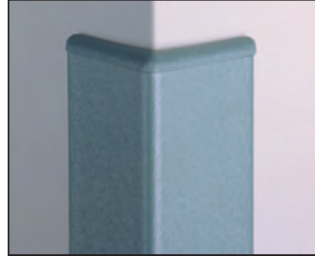
SURFACE MOUNTED CORNER GUARDS

Surface-mounted corner guards offer cost-effective protection for existing facilities, easy installation and a wide variety of styles and materials to meet virtually any requirement.

- Class A fire rating

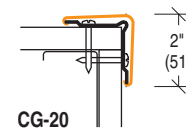
CG-10/TC-10

The CG-10/TC-10 style are a 90° corner guard that is constructed of heavy-duty aluminum retainer and rigid vinyl cover. The corner guards have 3" wings and are available with color coordinated end caps in standard lengths of 4', 8', 9', 10', 11' and 12'; custom lengths are available. Vinyl material is .100" thick; aluminum is .062" thick. Choose from standard colors shown on page 8.



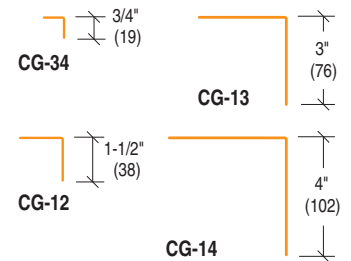
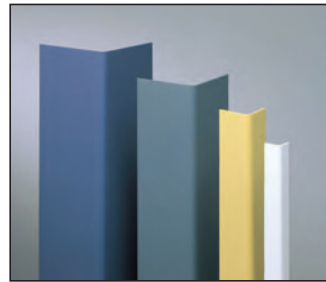
CG-20/TC-20

The CG-20/TC-20 style are a 90° corner guard that is constructed of heavy-duty aluminum retainer and rigid vinyl cover. The corner guards have 2" wings and are available with color coordinated end caps in standard lengths of 4', 8', 9', 10', 11' and 12'; custom lengths are available. Vinyl material is .085" thick; aluminum is .062" thick. Choose from standard colors shown on page 8.



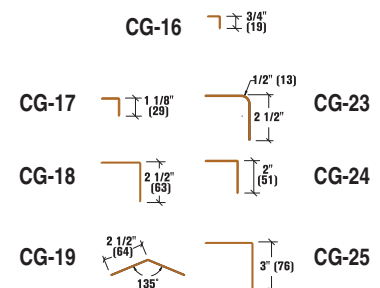
CG-34, -12, -13, -14

All four styles are 90° corner guards manufactured of rigid vinyl; other angles are also available. CG-34 Corner Guards have 3/4" wings; CG-12 have 1-1/2" wings; CG-13 have 3" wings, and CG-14 have 4" wings. All four styles can be supplied with double-faced adhesive tape or drilled for screw-in installation (CG-34 not available drilled). Available in 4', 8' and 12' standard lengths, CG-34 & CG-12 are made from .080" rigid vinyl and CG-13 & CG-14 are made from .093" rigid vinyl. Choose from standard colors shown on page 8.



CG-16, CG-17, CG-18; CG-19, CG-23, CG-24, CG-25

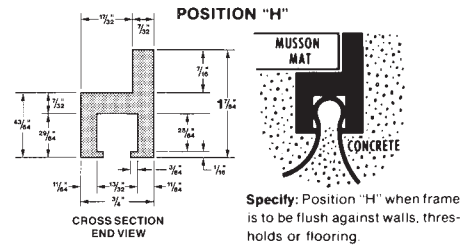
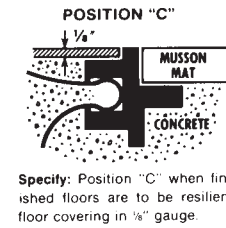
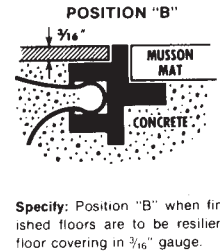
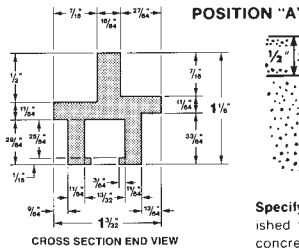
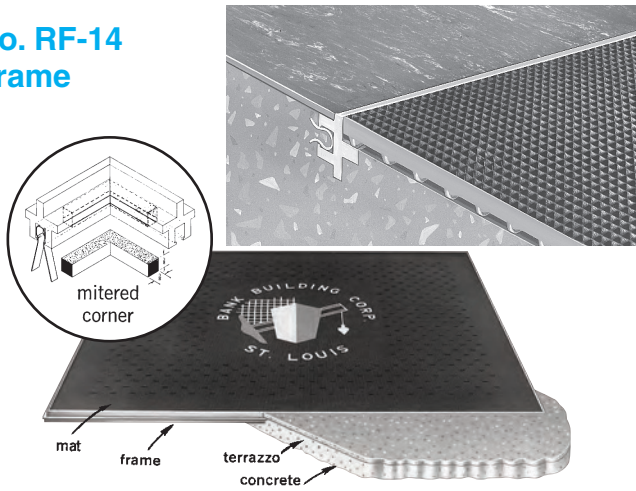
All seven styles are clear polycarbonate corner guards with angle and wing dimensions as shown on the cross-section drawings to the right. All styles are available in standard 4' and 8' lengths; styles CG-17 & CG-18 are available in multiple colors. CG-16 corner guards are not drilled; all other styles are provided with pre-drilled countersunk holes for screw-in installation.



ALUMINUM MAT FRAMES

ALUMINUM RECESS MAT FRAMES

No. RF-14 Frame



Insures a perfect fit of entrance mats in recess. Heavy gauge 6063 T-5 extruded aluminum, precut at factory, ready to assemble on job. Eliminate field measurements and construction delays; order mats in advance for last minute "dropping in place".

Frames can be furnished with square ends for open-end recess or for mitering on job. Maximum length is 17'; straight connecting pins supplied for frames over 17'. If frame is factory mitered, all sides must be same position. If all sides are not the same position, miter on jobsite; cannot use corner pins; spot-weld corners.

Frame size ordered will be the finished size of the inside measurement of the frame where the mat fits.

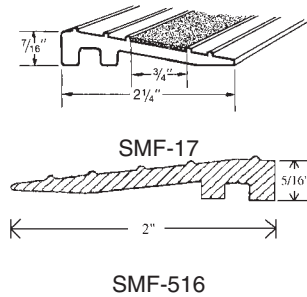
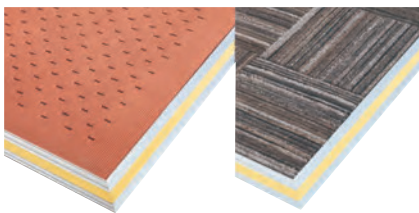
Use Frames with any mat or tile on pages 11-15 except 30mm vinyl back cocoa matting.

SPECIFICATIONS — No. RF-14

Furnish and install Musson Aluminum Recess Mat Frames of extruded aluminum 6063 T-5 in sizes indicated on drawings. Frame shall be pre-cut at factory, and supplied with vinyl corner pins and steel anchor keys. Install per manufacturer's recommendations to receive specified Musson Mat and to accommodate specified flooring material outside frame. Screenshot a cement base into interior frame area 7/16" below the floor level, using edge of frame as a guide. Install Frame Position "A", "B", "C", or "H" as applicable.

BRONZE ANODIZED ALUMINUM FRAMES — Position "H" only. Medium Bronze color electrostatically applied in two steps to Position "H" Frame shown above. All other specifications remain the same.

ALUMINUM BEVELED SURFACE FRAMES



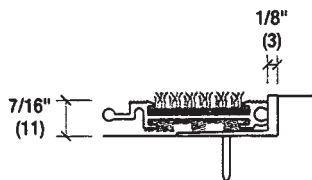
Beveled surface frames for on surface use. Use single length as approach edging. For complete recess frame (4 sides); list inside finished size where mat is placed. Frame will be 4-1/2" larger to outside edges on SMF-17 (4" on SMF-516). Furnished with square ends or 90° miter only; maximum length 16'3".

SPECIFICATIONS

Furnish and install Musson Aluminum Beveled Surface Frame of extruded aluminum 6063-T-5 in size indicated on drawings. Frame shall be prefabricated at factory to ensure fit of entrance mat and furnished complete with plastic anchors and flathead screws. Install using manufacturer's recommendations to receive the Musson entrance material specified. For SMF-17 only: frame shall have Black (or Yellow) Grit Strip applied to the beveled edge or can be provided without an abrasive strip.

Place a permanent recess frame, mat removable, on the surface.

NO. RF-125 ALUMINUM RECESSED "L" FRAME



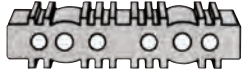
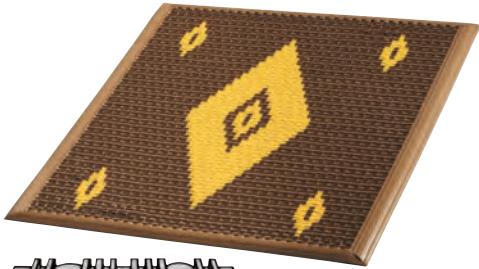
A Mill finish "L" shaped aluminum frame for existing recesses or surface use.

SPECIFICATIONS

Furnish and install Musson Aluminum "L" Frame of extruded aluminum 6063-T-5 in size indicated on drawing. Install with 3/16" x 1-1/4" Rawl Tapper or Tapcon-type Flat-head fastener (not included).

ENTRANCE MATS • ENTRY TILE - RECESS OR SURFACE

VINYL LINK



Link Cross-Section

Musson Vinyl Links Mats retain their vibrant colors, are reversible, give years of service. CW-16 style is available in solid colors, standard field designs (as shown above), with mosaic-style custom logos or with letters or numerals woven into. Furnished with matching or contrasting color nosing attached on all sides, 1-1/2" stub for recess (or 2" beveled for surface use).

Wires should run the short dimension of mat; same cleaning action whether traffic moves parallel or perpendicular to wires. Rust resistant spring steel wire is standard; stainless steel wire available at extra cost. Maximum size is 8' x 16'; however, we recommend that no section be over 48 sq. ft.

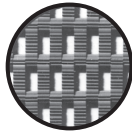
Select from standard solid colors.

CLOSE WEAVE No. CW-16



Close-Weave Link Mats have very tiny openings, approximately 1/16" x 1/2". Only dirt and water will fall through; will not catch or trip the smallest heel. Links are 2" long x 1/2" wide x 7/16" thick. Individual links have extra weight at stress points and extra strong ribs for cleaning action.

OPEN WEAVE No. OW-18

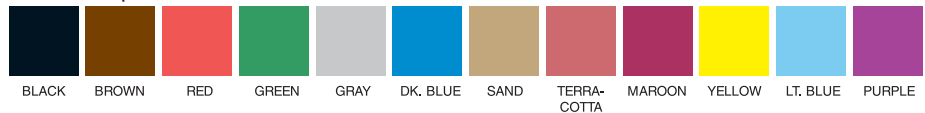


Open-Weave Link Mats have openings between links large enough to prevent hazardous wedging of spike heels, approximately 1/2" x 1". Links are 2" long x 1/2" wide x 7/16" thick. Links have extra weight at stress points and extra strong ribs for cleaning action. Ideal for school, factory and heavy traffic use.

SPECIFICATIONS:

Furnish and install Musson Vinyl Close-Weave Link Mats or Open-Weave Link Mats woven on rust-resistant galvanized wire with reinforced nosing on all edges, 1-1/2" wide for recess use (or 2" beveled for surface use). All corners vulcanized; links to be 2" long x 7/16" thick.

Drawings indicate direction of traffic, standard or special field design, borders, etc. Select from standard solid colors of Black, Brown, Red, Green, Gray, Dark Blue, Sand, Terra-Cotta, Maroon, Yellow, Light Blue, Purple or White. Maximum size 8' x 16' in one section; however, we recommend that no section be over 48 sq. ft. Standard maximum wire length 8'; special order up to 12'.



Product colors are reproduced as accurately as possible; make final color selection from actual samples.

FLUFF CORD STRIP TILE

A close-nap carpet-like surface of specially processed rubber-fabric strips made from recycled heavy-duty truck and bus tires; Natural Earthtone Gray Color. Strips are heat bonded to a woven flexible backing. Install inside or outside. Meets OSHA specifications and flammability requirements of DOC-FF-1-70.



SPECIFICATIONS - No. TT-12:

Furnish and install Musson No. TT-12 Fluff-Cord Strip Tile in alternating parquet pattern, either perpendicular or diagonally as shown on drawings. Tile shall be 3/8" thick x 12" x 12" tile size (or longitudinal rolls 12" wide x 25' long) with a close-nap nylon carpet-like surface in Natural Earthtone Gray color; manufactured of rubber-fabric, heavy duty truck or bus tire strips bonded to a flexible backing. Tile must be installed using manufacturer's specific installation instructions and Musson No. TT-390 Non-Flammable Environmentally Safe Adhesive.

COLORS - No. TT-12CT:

Fluff Cord Tiles are now available in tone colors. TT-12CT tiles are lightly colored tones of Bluetone, Browntone, or Greentone, allowing you to add color to the durability of Fluff Cord Tile. Slight discoloration may occur in direct sunlight applications. Use Specifications for No. TT-12 as shown above; list style No. TT-12CT and designate color desired.

DESIGNER TILE II



Made from the same recycled, post-consumer bias-ply tires as our Fluff Cord Tile, these triangular 24" x 17" tiles allow you to create a more design-oriented vestibule without compromising durability. These tiles can be used for interior or exterior applications and are easily maintained with a vacuum cleaner or hose. These tiles trap dirt, absorb moisture and protect interior floors from tracked on dirt. Use two triangular tiles to create a 17" x 17" square or four tiles to create a 24" x 24" square. Tiles should be installed with our TT-390 non-flammable adhesive (see Fluff Cord Tile above for more information).

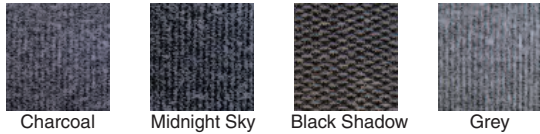
Stock No.	Size	Std. Ctn.	Wt.
DTII	24" x 17" x 17"	16 pcs.	35 lbs. pk.

ENTRANCE MATTING - RECESS OR SURFACE

HI-TRAFFIC CARPET MATTING



Select from standard colors of Charcoal, Midnight Sky, Black Shadow and Grey.



Constructed using the most advanced generation of large denier 100% polypropylene fiber with needle punch carpet technology, pile weight 4.8 oz. sq. ft. Produces an extremely coarse ribbed surface engineered to fulfill the wiper/scrapper function high traffic areas need. Needle punch gives superior appearance and ensures there will be no zipping or edge ravel. Can be "loose-laid" or adhered to floor with easy release adhesive. Vinyl beveled 2" nosing can be attached for surface mats.

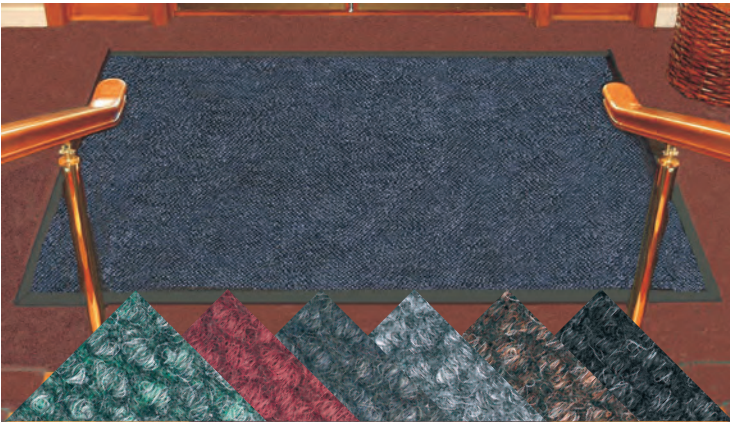
100% polypropylene large denier fiber; stain resistant; UV stable; permanent static control; does not absorb or retain water; resists mold, mildew and most chemicals. Latex gel backing; moisture and slip resistant.

Approx. 3/8" thick; custom sizes cut from 6'7" or 13'2" width x 82' length of rib pattern needle punch carpet.

SPECIFICATIONS - No. HT-CM

Furnish and install Musson No. HT-CM Hi-Traffic Entrance Carpet Matting of 100% polypropylene fiber needle punch carpet. Carpet matting shall have a longitudinal rib pattern, a pile weight of 4.8 oz. per sq. ft.; be of first quality and free from surface defects. Install 3/8" thick carpet matting, cut to size from standard widths and lengths, in recess areas as indicated on drawing using our No. 631 releasable adhesive (or on surface areas with aluminum or vinyl beveled edging).

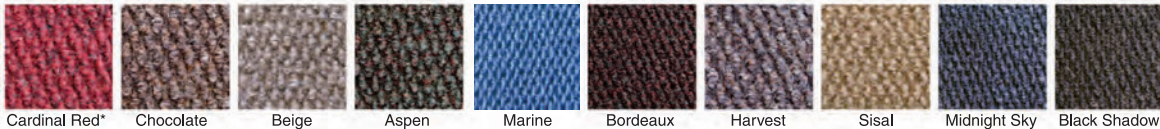
COBBLESTONE CARPET MATTING



Cobblestone entrance matting is a wear-, fade-, and crush-resistant entrance matting that is excellent for high traffic areas. Available in 6'7" and 13'2" widths, this 4.1 oz. per sq. ft. pile weight needlepunch polypropylene with a durable rubber crumb backing can be loose-laid or glued down. This 3/8" matting is resistant to mold, mildew, and stains. Available in full rolls up to 82' long, or in custom lengths. Vinyl beveled 2" nosing can be attached for surface mats.

SPECIFICATIONS - No. CB - CM

Furnish and install Musson No. CB-CM Cobblestone Entrance Matting of 100% polypropylene fiber needlepunch carpet. Carpet matting shall have a cobblestone pattern and be free from surface defects. Install 3/8" thick carpet matting, cut to size from standard width and lengths, in recess areas as indicated on drawing using our No. 631 releasable adhesive (or on surface area using vinyl edging or aluminum beveled frame).



*Available in Cobblestone only.

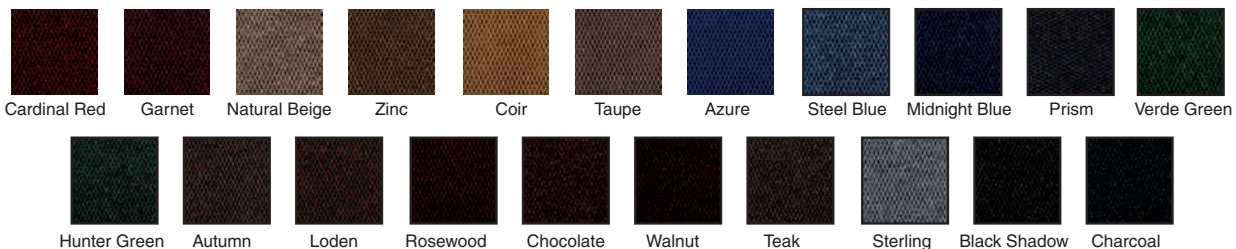
COBBLESTONE PLUS ENTRANCE MATTING



15/16" thick, extra heavy-duty needlepunch polypropylene fiber (6 oz. per square foot pile weight) is perfect for the most heavy traffic entrances. Matting can be loose laid or adhered with our No. 631 easy release adhesive. Available in widths of 6'7" and 13'2" up to 82' long; custom sizes and shapes are available. Beveled edging can be attached to all sides.

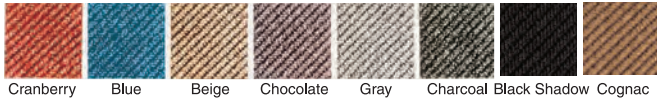
SPECIFICATIONS - CP-CM:

Furnish and install Musson No. CP-CM Cobblestone Plus Entrance Matting of 100% heavy-duty polypropylene fiber needlepunch carpet. Carpet matting shall have a cobblestone pattern and be free from surface defects. Install 15/32" thick carpet matting, cut to size from standard width and lengths, in recess areas as indicated on drawing using our No. 631 releasable adhesive (or on surface area using vinyl edging or aluminum beveled frame).



ENTRANCE TILES - RECESS OR SURFACE

DIAGONAL RIB CARPET TILES



A heavy-duty modular carpet tile with excellent scraping and dirt removal. Designed for interior use in entrances, vestibules, lobbies and other hi-traffic areas. Install in a recess or on the surface with our No. 631 releasable adhesive; aluminum frames or vinyl edging available. Sold in full cartons of 20 tiles.

SPECIFICATIONS – DR-CT

Furnish and install Musson No. DR-CT Diagonal Rib Carpet Tiles made of 100% polypropylene pile yard with a bitumen backing in areas as indicated on drawings. Tile shall be of first quality commercial grade carpet, free of surface defects. Install tile in an alternating rib parquet pattern in indicated recess with our No. 631 releasable adhesive (or on surface using vinyl edging or aluminum beveled frame). Tile shall be 3/8" thick, 19-11/16" x 19-11/16" square carpet tile. Choose from standard carpet colors of Cranberry, Blue, Beige, Chocolate, Gray, Charcoal, Black Shadow or Cognac.

BERBER TILES



A heavy-duty 27 ounce Berber pattern needlepunch olefin tile that "breathes" so moisture evaporates quickly. Excellent for interior use in entrances, lobbies and vestibules of high traffic buildings. Install in a recess or on the surface with our No. 631 releasable adhesive; aluminum frames or vinyl edging available. Sold in full cartons of 12 tiles.

SPECIFICATIONS – BT-220

Furnish and install Musson No. BT-220 Berber Tiles made of olefin fibers with a bitumen backing. Tile shall be of first quality commercial grade carpet, free of surface defects. Install tile in an alternating pattern in indicated recess with our No. 631 releasable adhesive (or on surface using vinyl edging or aluminum beveled frame). Tile shall be 3/8" thick, 19-11/16" x 19-11/16" square carpet tile. Choose from standard carpet colors of Anthracite, Brown Sugar, Cardinal Red, Cocoa, Marine, Mid Grey, Sisal, Aspen, Black Shadow, Bordeaux, Harvest or Midnight Sky.

BERBER TILE PLUS



An extra heavy-duty Berber pattern tile for the toughest entrances; 15/32" thick; 19-11/16"x19-11/16" square tile; Berber pattern of 54 ounce/square yard needlepunch polypropylene with a bitumen backing. Our No. 631 easy release adhesive allows for easy removal and re-adhering of new tiles. Sold in full cartons of 12 tiles.

SPECIFICATIONS – BTP-CT

Furnish and install Musson No. BTP-CT Berber Tile Plus Tiles made of polypropylene fibers with a bitumen backing. Tile shall be of first quality commercial grade carpet, free of surface defects. Install tile in an alternating pattern in indicated recess with our No. 631 releasable adhesive (or on surface using vinyl edging or aluminum beveled frame). Tile shall be 15/32" thick, 19-11/16" x 19-11/16" square carpet tile. Choose from standard colors of Cardinal Red, Garnet, Natural Beige, Zinc, Coir, Taupe, Azure, Steel Blue, Midnight Blue, Prism, Verde Green, Hunter Green, Autumn, Loden, Rosewood, Chocolate, Walnut, Teak, Sterling, Black Shadow, Charcoal, Burgundy or Harvest.

ENTRY TILE • ENTRANCE MATS - RECESS OR SURFACE

ALUMINUM/VINYL ROLL-UP MATS



Easy to install, this versatile roll-up mat is for commercial entryways or service areas of schools, universities, offices, malls, factories, retail stores, restaurants or churches. Aluminum rails run counter to traffic flow. Surface remains dry as debris and water falls through. Unique hinged design rolls up easily, allows removal of collected dirt and water.

MAXI-TUFT INSERTS:

Long-wear "MLW" 100% polyamide nylon carpet with tetra-lobal fibers bonded to continuous two-ply rigid backing. Carpet strips incorporate anti-stain, anti-static and anti-microbial additives.

Heated interior absorption applications



Static Coefficient of Friction: Dry, 0.87; wet, 0.87 (ASTM D-2047-82)

PVC VINYL INSERTS:

Dual durometer flexible vinyl locked into extruded aluminum rails. Rib design provides traction and scraping.

Exterior or interior scraping applications

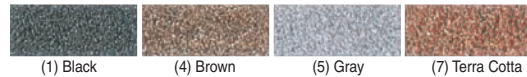


Static Coefficient of Friction: Dry, 0.65; wet, 0.71 (ASTM D-2047-82)

ABRASIVE INSERTS:

Continuous abrasive surface, (two part epoxy combined with aluminated oxide grit) formed into extruded aluminum rails.

Exterior or interior scraping applications



Static Coefficient of Friction: Dry, >1.14; wet, >1.20 (ASTM D-2047-82)

BRISTLE FILAMENT INSERTS:

Heavy-duty nylon/polypropylene mix carpet with aggressive brush action locked into aluminum rails.



SPECIFICATIONS:

Furnish and install Musson Aluminum/Vinyl Roll-Up Mats in size and shape indicated on drawings. Mats shall have extruded aluminum tread rails connected by vinyl (or aluminum) hinges; a rigid vinyl base; vinyl leading edges for recess (or surface) use. Aluminum tread rails to be 6063-T5 alloy in mill finish (or bronze anodized, clear anodized or black anodized). Tread rails shall run counter to traffic flow with surface inserts of Maxi-Tuft polyamide nylon carpet (or vinyl, abrasive or bristle filament). Not recommended for heavy, pivoting rolling loads.

Aluminum/Vinyl Roll-Up Mats provide long lasting protection for interior and exterior high traffic areas. Heavy duty vinyl base cushions allow quieter traffic and improve wear. Inserts are available in four different materials to accommodate any application; inserts can be alternated to provide for both scraping and absorption from foot traffic.

All mats are custom made to size. Maximum size 8 ft. wide x 12 ft. long; maximum aluminum rail length is 12 ft.; maximum square feet per section is 66.



EM-650 Vinyl Hinge

The EM-650 system combines continuous vinyl base cushions with a co-extruded perforated black vinyl hinge; perforated hinges are standard.



EM-800 Aluminum Hinge

The EM-800 system features solid all aluminum construction with a continuous hinged rail; specify solid or perforated hinges.

CONSTRUCTION: A series of aluminum tread rails spaced at 1-7/8" O.C. connected by a black vinyl hinge or mill finish aluminum hinge; supplied with a square aluminum edge, a black square vinyl edge, or a black beveled vinyl edge around the perimeter.

ALUMINUM TREAD RAILS: Furnished in mill finish 6063-T5 aluminum alloy. Optional finishes of bronze, clear or black anodized.

OPTIONAL VINYL EDGES: Mats for surface use can have black beveled nosing attached; mats for recess use can have black square nosing attached.

LINEAR TILE



Standard Color: Black Vinyl with Charcoal Carpet.

Custom colors available; check with customer service for details

Second-generation interlocking 1/2" thick, 11-7/8" x 11-7/8" recycled PVC tiles with polypropylene needle punch rib pattern carpet inserts. Brushes off sand, dirt and slush from shoes and cart wheels; open grid drains away water and debris. Modular tiles allow flexibility and the ability to fit the product to any size area. Tiles snap together easily to install and replace. Beveled ramp edges are available for non-recess applications.

This product is part of our sustainable development program where the tiles can be returned at the end of the lifecycle for a credit toward replacement product. The material is then cleaned, ground, treated for contaminants in an environmentally safe process and re-formed into new matting. Check with our customer service department for details.

ENTRANCE MATS • ENTRY TILES - RECESS OR SURFACE

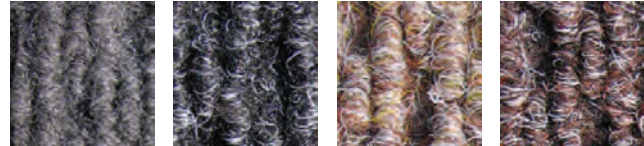
DIRT CATCHER TILE



A heavy-duty, 19-11/16"x19-11/16" tile packed with 60 ounces of 100% solution dyed polypropylene is ideal for any entrance area where extreme traffic occurs. The Dirt Catcher Tile comes with a 7 year wear warranty on flat surfaces and is permanently anti-static. This tile's unique dirt pocket configuration effectively removes and traps dirt and moisture. Dirt Catcher Tile has a special TacFast backing that allows you to either glue the tile down or apply the tile with a non-adhesive procedure. When gluing the tile down, install with No. 2230 Carpet Tile Adhesive.

SPECIFICATIONS:

Furnish and install Musson Dirt Catcher Tile made of 100% solution dyed polypropylene with TacFast backing, which allows for glue-down or non-adhesive installation. Sold in full cartons of 12 tiles. Choose from 4 standard colors:



Mink

Smoke

Tan

Heath

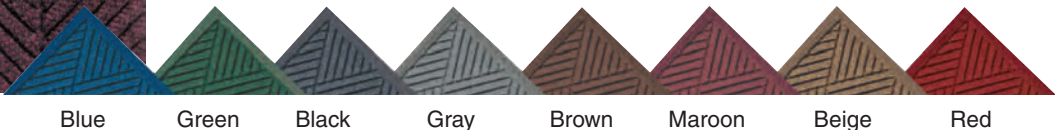
PREMIER TILES



Premier Tiles are anti-static, 100% post-consumer recycled P.E.T. tiles with a rubber-reinforced raised diagonal pattern that resists crushing. This 18" x 18" tile is excellent for high traffic areas such as grocery stores, airports, hospitals and nursing homes.

SPECIFICATIONS – No. PM-21714 & PM-217716

Furnish and install Musson No. PM-21714 (1/4" thick) or PM-217716 (7/16" thick) Premier Tiles made of 100% polypropylene fibers with a rubber backing. Tile shall be made of first quality commercial grade carpet, free of surface defects. Install tile in indicated recess with PT-24 easy release adhesive, (or on surface area using vinyl edging or aluminum beveled frame). Tile shall be 1/4" or 7/16" thick, 18" x 18" square carpet tile. Select from standard colors of Blue, Green, Black, Gray, Brown, Maroon, Beige or Red.



Blue

Green

Black

Gray

Brown

Maroon

Beige

Red

COCOA MATS - VINYL BACK



Vinyl-Back Cocoa Mats in Natural Golden Tan color provides safe leak-proof brush action cleaning. All natural fibers from the outer husk of the coconut are fused into a vinyl backing by a unique process to create an extremely long wearing and efficient shoe cleaning surface. The vinyl-back allows trimming to fit any size or shape entrance; is skid proof, lays flat, stays in place. Tan color is colorfast. Ideal for use in recesses; cropped bristles give excellent scraping action. These mats clean grit and moisture from shoes, dry rapidly; won't mildew or rot. Mats do not generate static electricity. Mats can be easily vacuumed or washed with mild soap. Meets Department of Commerce Flammability Specs. DOC-FF-1-70; classified as a "B" rating under Test ASTM-E84-80.

We now have 5/8" thick Cocoa Matting available in Black, Red, Brown, Green, Blue and Gray in rolls and cut lengths up to 6'7" x 41'0". For more information, contact customer service at 800-321-2381 or visit our website at www.mussonrubber.com

SPECIFICATIONS:

Furnish and install Musson Vinyl-Back Cocoa Mats, natural Golden Tan color; mats shall be 15mm thick; or 19mm thick; or 30mm thick; custom-made to size and shape to fit areas detailed on drawings. Mats shall meet DOC Flammability Spec.(DOC-FF-1-70) and shall not generate static electricity. Custom made mats shall be _____ wide by _____ long (maximum size is 6' wide x 44' long for 15mm & 19mm and 6' x 33' for 30mm).

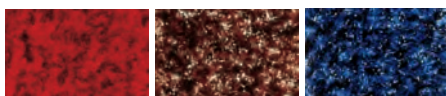
Ideal for use in our recess frames. For 15mm or 19mm mat, specify Position "A", "B", "C", or "H"; frame not recommended for 30mm recess applications. Black Vinyl Beveled Nosing can be attached to any or all edges of 15mm and 19mm for surface use.

VINYL BACK / RUBBER BACK CARPET MATS

SPECTRA-DELUXE OLEFIN CARPET MATS



Water Absorption	Soil Retention	Wearability	Sunlight Fade Resistance	Stain Resistance
V-Good	V-Good	V-Good	Best	V-Good



Red Brown Blue



Charcoal Green* Walnut

- 17 oz. of 100% continuous filament solution dyed olefin yarn per square yard fused to a 65 mil durable solid vinyl back.
- Traps over one gallon of water per square yard; dries faster than conventional carpet mats to lessen slippery hazard.
- Repels stains to maintain mat's original beauty; clean with vacuum, hose or broom.
- Made in the U.S.A.

SPECTRA-DELUXE MATS – approx. 1" vinyl border on all four sides.

Stock No.	Approx. Size	Std. Ctn.	Weight
SD23	24" x 36"	1	3.9 lbs.
SD34	36" x 48"	1	7.6 lbs.
SD35	36" x 60"	1	10.0 lbs.
SD36	36" x 72"	1	10.8 lbs.
SD46	48" x 72"	1	14.3 lbs.
SD48	48" x 96"	1	20.2 lbs.
SD310	36" x 120"	1	19.0 lbs.
SD410	48" x 120"	1	25.3 lbs.

SPECTRA-DELUXE RUNNERS – 36", 48" or 72" wide – available in cut lengths or full rolls of approx. 60 ft. Approx. 1" vinyl border on both long edges. (Edging can be attached to cut ends.)

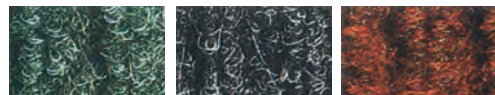
Stock No.	Approx. Width	Approx. Roll Size	Wt. Per Lin. Ft.
SDR36	36"	60 ft.	1.6 lbs.
SDR48	48"	60 ft.	2.2 lbs.
SDR72	72"	60 ft.	3.2 lbs.

*Green not available in 72" widths

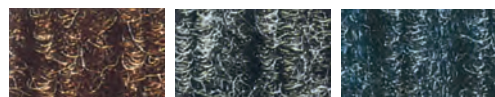
SPECTRA-RIB OLEFIN CARPET MATS



Water Absorption	Soil Retention	Wearability	Sunlight Fade Resistance	Stain Resistance
V-Good	V-Good	V-Good	Best	V-Good



Green Charcoal Red



Brown Gray Blue

- 26 oz. of deep rib 100% Polypropylene needle punch fibers per square yard of permanently fused to a 75 mil solid vinyl backing.
- Scrapes shoes clean; is easily cleaned with a vacuum, hose or broom.
- Use inside or outside; stands up to the toughest foot traffic situations.
- Made in the U.S.A.

SPECTRA-RIB MATS – approx. 1" vinyl border on all four sides. Ribs run parallel to long dimension of mats.

Stock No.	Approx. Size	Std. Ctn.	Weight
SR23	24" x 36"	1	4.6 lbs.
SR34	36" x 48"	1	9.3 lbs.
SR35	36" x 60"	1	11.3 lbs.
SR36	36" x 72"	1	13.5 lbs.
SR46	48" x 72"	1	18.0 lbs.
SR48	48" x 96"	1	24.0 lbs.
SR310	36" x 120"	1	22.0 lbs.
SR410	48" x 120"	1	29.5 lbs.

SPECTRA-RIB RUNNERS – 36", 48" or 72" wide – available in cut lengths or full rolls of approx. 60 ft. Approx. 1" vinyl border on both long edges. (Edging can be attached to cut ends.) Ribs run parallel to long dimension of roll.

Stock No.	Approx. Width	Approx. Roll Size	Wt. Per Lin. Ft.
SRR36	36"	60 ft.	2.3 lbs.
SRR48	48"	60 ft.	3.0 lbs.
SRR72	72"	60 ft.	4.5 lbs.

CLASSIC IMPRESSIONS HD



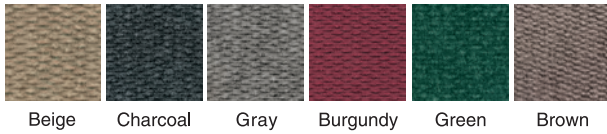
Turn any logo into a beautiful nylon entrance mat! Order as few as one mat – no set up charges. A new state-of-the-art digital process allows up to 24 colors on a single mat and the ability to create 3-D images.

Carpet is a plush, 100% tight two-ply-twist static dissipative nylon with stain stopper dye technology for excellent colorfastness. Premium rubber backing has tiny grippers for use on carpet or hard surfaces.

Sizes range from 2' x 3' to 6' x 40' with custom sizes available.

VINYL BACK / RUBBER BACK CARPET MATS

SPECTRA-BERBER CARPET MAT



- 24 oz. of premium polypropylene berber pattern fused to a heavy-duty vinyl back
- Excellent for wet, snowy areas
- Can be used inside or outside
- Made in the U.S.A.

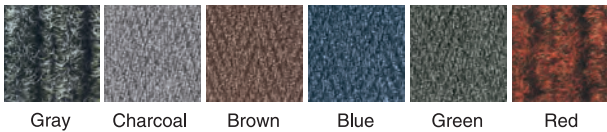
SPECTRA-BERBER MATS – approx. 1" vinyl border on all four sides.

Stock No.	Approx. Size	Std. Ctn.	Weight
SB23	24" x 36"	1	4.5 lbs.
SB34	36" x 48"	1	9.0 lbs.
SB35	36" x 60"	1	11.3 lbs.
SB36	36" x 72"	1	13.5 lbs.
SB46	48" x 72"	1	18.0 lbs.
SB48	48" x 96"	1	24.0 lbs.
SB310	36" x 120"	1	22.5 lbs.
SB410	48" x 120"	1	30.0 lbs.

SPECTRA-BERBER RUNNER – 36", 48" or 72" wide – available in cut lengths or full rolls of approx 60 ft. Approx. 1" border on both long edges. (Edging can be attached to cut ends)

Stock No.	Approx. Width	Approx. Roll Size	Wt. per Lin. Ft.
SBR36	36"	60 ft.	2.3 lbs.
SBR48	48"	60 ft.	3.0 lbs.
SBR72	72"	60 ft.	4.5 lbs.

SPECTRA-CHEVRON POLYPROPYLENE



- Decorative chevron design brushes dirt and moisture from shoes with multi-directional action; retains moisture, channels away dirt.
- 26 oz. of 100% polypropylene needle punch fibers per square yard is fused to a 75 mil heavy duty solid vinyl backing.
- Deep, rich colors add beauty to entryway.
- Made in the U.S.A.

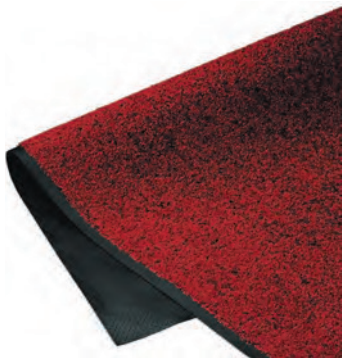
MATS – Approx. 1" vinyl border on all four sides.

Stock No.	Approx. Size	Std. Ctn.	Weight
SCP23	24" x 36"	1	4.6 lbs. ea.
SCP34	36" x 48"	1	9.3 lbs. ea.
SCP35	36" x 60"	1	11.3 lbs. ea.
SCP36	36" x 72"	1	13.5 lbs. ea.
SCP46	48" x 72"	1	18.0 lbs. ea.
SCP48	48" x 96"	1	24.0 lbs. ea.
SCP310	36" x 120"	1	22.0 lbs. ea.
SCP410	48" x 120"	1	29.5 lbs. ea.

RUNNERS – Full Rolls or Cut Lengths, vinyl border on both long edges. (Edges can be attached to cut ends.)

Stock No.	Approx. Size	Weight
SCPR36	36" x 60 ft.	2.3 lbs. lin. ft.
SCPR48	48" x 60 ft.	3.0 lbs. lin. ft.
SCPR72	72" x 60 ft.	4.5 lbs. lin. ft.

TRI-GRIP NYLON



Colors Available: Midnight Blue, Solid Red, Charcoal, Platinum, Stardust Grey, Chocolate, Navy, Cabot Grey, Suede, Red/Black, Dark Granite, Autumn Brown, Steel Blue, Black Opal, Burgundy Frost, Silver, Slate, Solid Black.

Heavy, 100% static dissipative nylon face offers outstanding absorption and durability. Tight, heat-set Ultra-Twist yarn construction resists packing and crushing. Dirt filters into the mat rather than remaining on top. Molded rubber backing resists curling and cracking in all types of weather. Available in flat, gripper and suction backing types. Also available with oil and grease resistant 100% Nitrile Rubber backing. Passes flammability standard DOC-FF-1-70.

Stock No.	Approx. Size	Weight
TG23	24" x 35"	2.9 lbs. ea.
TG34	35" x 47"	5.6 lbs. ea.
TG35	35" x 59"	6.7 lbs. ea.
TG36	35" x 69"	8.6 lbs. ea.
TG38	35" x 95"	11.5 lbs. ea.
TG46	45" x 69"	12.5 lbs. ea.
TG48	45" x 95"	15.7 lbs. ea.
TG310	35" x 118"	14.3 lbs. ea.
TG410	45" x 118"	19.2 lbs. ea.

RUNNERS – Special non-seamed sizes are available in 35", 45", 58" & 69" widths up to 40' in full foot increments in select colors.

RUBBER BACK CARPET MATS

SPECTRA-SOAKER POLYPROPYLENE



*All dimensions have a +/- 3% tolerance.

- 100% premium polypropylene with a durable fabric border.
- 24 oz. per square yard of dual-denier polypropylene yarn secured to a 100% SBR rubber back.
- Raised rubber edge forms a tray to hold water and dirt.
- Special gripper rubber backing.

Colors: Charcoal, Dark Brown, Medium Gray, Medium Brown, Red/Black, Navy, Bordeaux, Evergreen

Mats – Stock Sizes only with perimeter molded lip.

Stock No.	Approx. Size*	Std. Ctn.	Weight
SSP23	23" x 35"	1	5 lbs. ea.
SSP34	35" x 45"	1	9 lbs. ea.
SSP35	35" x 59"	1	12 lbs. ea.
SSP38	35" x 95"	1	18 lbs. ea.
SSP46	45" x 69"	1	17 lbs. ea.
SSP48	45" x 96"	1	23 lbs. ea.
SSP68	70" x 95"	1	35 lbs. ea.
SSP310	35" x 116"	1	21 lbs. ea.
SSP410	45" x 116"	1	29 lbs. ea.

Roll Goods – sold in even foot increments with perimeter molded lip

Stock No.	Approx. Width*	Wt. per lineal foot
SSPR36	35"	2.0 lbs.
SSPR48	45"	2.9 lbs.
SSPR72	70"	4.4 lbs.

ECO PREMIER SOAKER MATS



100% post-consumer recycle PET fabric made from plastic bottles on an SBR rubber backing which contains 20% recycled content from car tires. This 30 ounce per square yard mat with bi-level surface effectively removes and stores dirt and moisture beneath shoe level between cleanings.

Stock mats with fabric-covered molded perimeter lip.



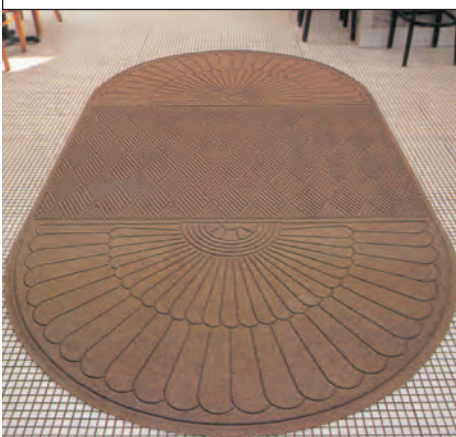
Raised rubber edge, covered with matching fabric, forms a tray to hold water.

Stock No.	Approx. Size*	Weight
EFP23	24" x 35"	6 lbs. ea.
EFP34	35" x 46"	11 lbs. ea.
EFP35	35" x 59"	13 lbs. ea.
EFP36	35" x 70"	15 lbs. ea.
EFP38	35" x 101"	20 lbs. ea.
EFP310	35" x 118"	24 lbs. ea.
EFP320	35" x 239"	44 lbs. ea.
EFP46	45" x 70"	19 lbs. ea.
EFP48	45" x 101"	26 lbs. ea.
EFP410	45" x 118"	30 lbs. ea.
EFP420	45" x 239"	60 lbs. ea.
EFP68	71" x 101"	38 lbs. ea.
EFP620	71" x 239"	93 lbs. ea.

*All dimensions have a +/- 3% tolerance.

GRAND PREMIER

Now made from 100% post-consumer recycled P.E.T. reclaimed from plastic Bottles!



Grand Premier is an amazing mat series that features an innovative rubber-reinforced face design for added beauty and performance and a fashion border constructed of the same 100% polypropylene fiber system as the mat surface for an attractive look that is easy to maintain.

Grand Premier's unique, diamond shaped face pattern is available in seven well balanced colorways, creating the ultimate visual appearance. The face design can be configured three different ways - a half oval pattern alone, a rectangle with the half oval on one end, and a rectangle with half an oval on each end. And mats come in 13 standard sizes.

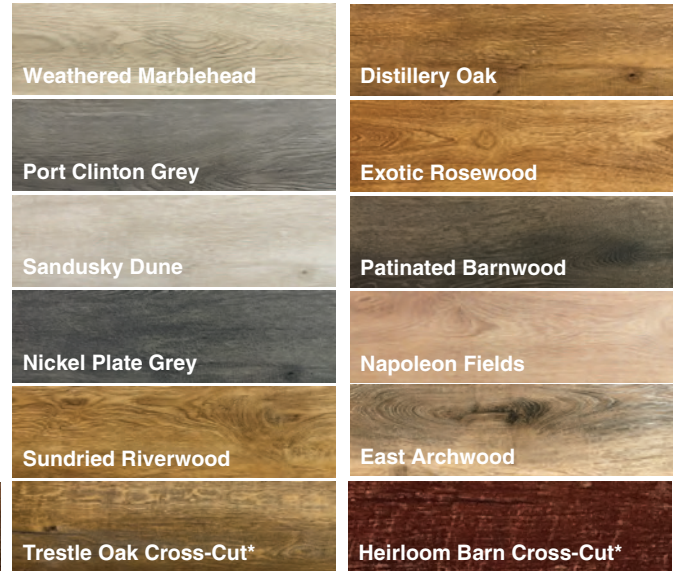
Available in 5 Half Oval One End sizes, 5 Half Oval Both End sizes, and 3 Half Oval sizes. For available sizes, visit our website link at mussonrubber/product/grand-premier/



40 MIL LUXURY VINYL TILE

ANTIQUE COLLECTION - 7" x 48" PLANKS

A long-lasting, low-maintenance floor covering with an antique flair. These 7"x48" planks offer superior resistance to high traffic with a registered-embossed 40 mil ceramic-bead wear layer surface. It is easy to maintain with no special waxes, sealers or other finishes required to maintain its appearance; available in 13 antique wood patterns.



**Homestead Plank, Trestle Oak Cross-Cut and Heirloom Barn Cross-Cut are not registered-embossed.*

GRANITE COLLECTION - 18" x 18" TILES

Our Granite collection combines the beauty and feel of granite with the durability required for high-traffic commercial applications. These 18"x18" tiles offer superior resistance to high traffic with a registered-embossed 40 mil ceramic-bead wear layer surface. It is easy to maintain with no special waxes, sealers or other finishes required to maintain its appearance; available in 11 stone and stained concrete patterns.



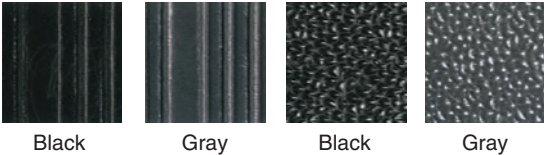
**Toledo Iron and Huron Ore are also available in 18" x 36" tile*

ANTI-FATIGUE MATTING

SOF-SPUN VINYL SPONGE MATTING



Colors: Black or Gray



A fatigue reducing comfortable barrier between floors and workers feet. 100% chemically blown polyvinyl chloride closed cell sponge offers a comfortable slip resistant surface to walk on or to stand; keeps employees off hard, cold floors. Available in rib-top or pebble surface in 3/8" thickness and rib-top only in 5/8" thickness; rounded edges along the length of the mat reduces tripping hazard. Grease, oil and ozone resistant. Excellent for use in commercial and industrial work areas.

Available in cut lengths or full rolls of 60 ft. for 3/8" thick; 5/8" thick sold in full 30' rolls only.

Stock No.	Thickness	Approx. Width	Wt. per Lin. Ft.
VC2	3/8"	24"	1.3 lbs.
VC3	3/8"	36"	2.0 lbs.
VC4	3/8"	48"	2.6 lbs.
SSV2	5/8"	24"	1.7 lbs.
SSV3	5/8"	36"	2.6 lbs.
SSV4	5/8"	48"	3.4 lbs.
SSV6	5/8"	72"	5.2 lbs.

- Meets Dept. of Commerce Specs. DOC-FF-1-70.
- Made in the U.S.A.

FOOTLOVER VINYL SPONGE MATS



The same product as Sof-Spun (above) in standard mat sizes. Available in rib-top or pebble surface in either Black or Gray; mats have rounded edges on all sides to reduce tripping.

Stock No.	Thickness	Size	Weight
VC23	3/8"	24" x 36"	3.9 lbs
VC35	3/8"	36" x 60"	9.7 lbs
VC46	3/8"	48" x 72"	15.6 lbs
SFL23	5/8"	24" x 36"	7.1 lbs

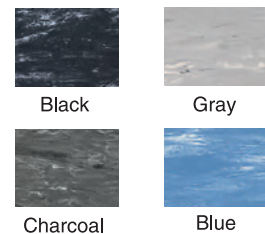
FOOT COMFORT ANTI-FATIGUE MATS



Musson Foot Comfort mats feature a long wearing 1/8" thick smooth vinyl surface fused to a 3/8" thick sponge base to give 1/2" of cushioned thickness. Mats will reduce tired feet, aching back and sore legs to improve worker performance.

STANDARD MAT SIZES

Stock No.	Size	Weight
J	24" x 36"	11 lbs.
H	36" x 60"	29 lbs.
HR36	36" up to 60'	5.4 lbs. ft.
HR48	48" up to 60'	7.2 lbs. ft.



Mats are not intended for kitchen use. Do not work on wearing high heeled shoes. Do not place chairs, stools or tables or allow wheeled traffic on the mat.

DIAMOND-PLATE VINYL FATIGUE MATS



- Heavy duty vinyl matting with a convex diamond surface pattern helps reduce slippage.
- A self-extinguishing, non-flammable composition that is also resistant to most fluids, oils, grease and chemicals if removed promptly.
- Contrasting color borders promote safety and awareness.
- All mats and runners have beveled edges on all four sides and rounded corners - to help hug the floor - reduces tripping hazard.
- 1/8" thick vinyl top is fused to a 1/2" thick industrial grade vinyl sponge - overall thickness of mat is 5/8".

STANDARD SIZE MATS – All edges beveled, rounded corners.

Stock No.	Approx. Size	Weight
DPS24	24" x 36"	9 lbs.
DPS36	36" x 60"	23 lbs.

CUSTOM LENGTH MATS – All edges beveled, rounded corners.

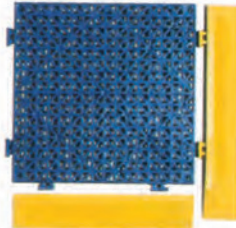
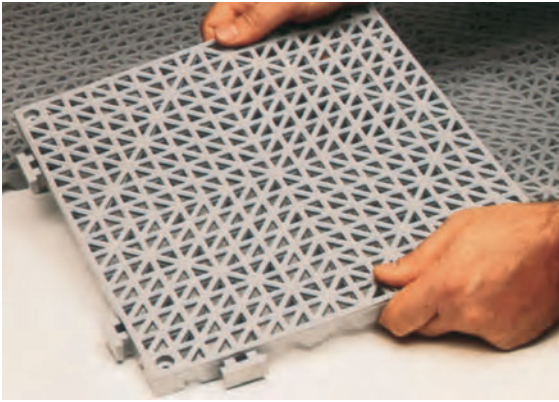
Stock No.	Approx. Size	Wt. per Lin. Ft.
DPS24-R	24" x up to 75 ft.	3.0 lbs.
DPS36-R	36" x up to 75 ft.	4.5 lbs.
DPS48-R	48" x up to 75 ft.	6.0 lbs.

Available in solid Black, solid Gray, Black with Yellow contrasting borders (longitudinal edges only).

MISCELLANEOUS MATTING PRODUCTS

CUSHION TILES

MADE FROM RECYCLED PVC VINYL



11.84" beveled edges provides smooth transition between floor & tiles.

Cushion Tiles are ideal for industrial, commercial and sports applications; they offer comfort and protection. Each tile exposes over 1/3 of the floor below to the air; allows circulation to keep feet cool and comfortable. Open grid design retards spread of mold, mildew and bacteria; resistant to sunlight, ultraviolet light, oils, solvents, acids and most chemicals. Easily trim to fit any area; no adhesive necessary. Modular tiles can be taken apart and reassembled with minimum effort; beveled edging minimizes the possibility of tripping and allows use of wheeled carts.

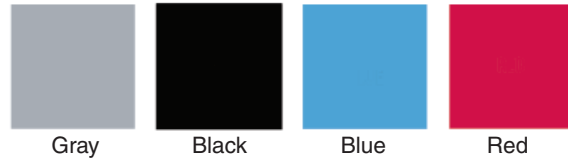
Use for:

Pools	Sun Rooms
Boats	Steam Rooms
Saunas	Locker Rooms
Showers	Health Clubs
Marinas	Workout Areas
Hot Tubs	Exercise Rooms

Stock No.	Item & Size	Std. Pack	Weight Std. Pack
CT1212	Vinyl Cushion Tile	36 pcs.	55 lbs.
CTBE	*beveled Edge, 11.84" long	1 pc.	1 lb.
CTBC	*beveled Corner, 13.63" long	1 pc.	1 lb.

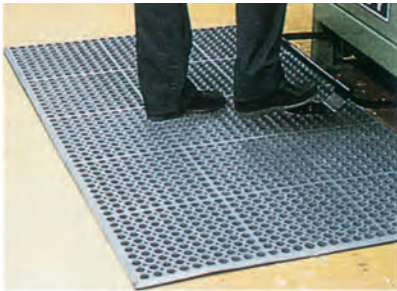
*Beveled Edge and Corner also available in Safety Yellow Color.

*Beveled edging and beveled corner available in both male and female types. Specify which type when ordering.



Cushion Tiles are 11.84" x 11.84" square; 3/4" thick; with a 1-1/2" square ribbed pattern. Made in the U.S.A. of flexible 100% recycled PVC plastic.

WORKSTATION – PLUS KITCHEN & ALL PURPOSE MATS



A 1/2" thick, grease-resistant rubber, lightweight anti-fatigue mat. Advanced design makes handling and cleaning easy. Provides foot comfort and traction. Mat has a unique bevel edge on all four sides to improve safety and allow wheeled traffic. Use in restaurants on the cooking line, dishwashing area, service counter, food prep or bar areas. Other uses: assembly lines, laboratories, service counters, work stations; when a job requires being on your feet.

Available in Grease-Resistant Black or Grease-Proof Red.

Standard 3' x 5' size.

Stock No.	Size	Color	Std. Pack	Weight
WP35B	3' x 5'	Black	1	30 lbs.
WP35R	3' x 5'	Red	1	30 lbs.

SUPERSCRAPE IMPRESSIONS – ALL RUBBER LOGO MATS



Turn your customer's digital image into a custom logo mat for home or business use. No set-up charges; 100% Customer Satisfaction Guarantee.

This all rubber, anti-static, UV, oil and chemical resistant logo mat is excellent for both outdoor and indoor applications. The raised circles give great traction while effectively removing and trapping dirt, grime and water from shoes.

Improved photographic quality images have unlimited colors and offer excellent tones and shades with unparalleled detail and clarity.

Superscrape impressions mats are produced by molding a digitally printed thermo-plastic material into durable Nitrile rubber that will not crack or curl.

Available in 8 standard sizes: 34"x29", 34"x45.5", 34"x54.5", 34"x111", 45"x67.5", 45"x95", 68"x68" and 68"x96".

WEIGHT ROOM MATTING

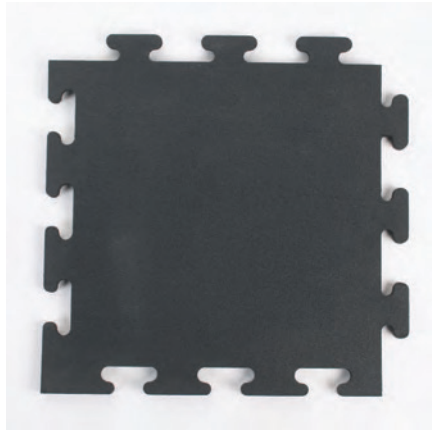
RUBBER SPORT FLOOR



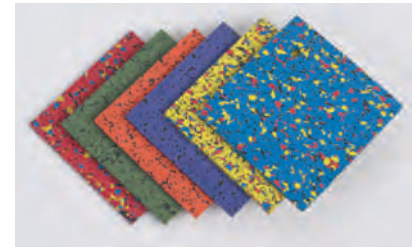
A durable, spike-resistant floor made of recycled rubber combined with color flecks of new rubber to create an environmentally friendly, slip resistant sports surface.

Rubber Sport Floor is available in 48" wide roll goods or interlocking tiles. Rubber Sport Floor is made with a Black background and a 10%, 20% or 35% fleck of Red, Gray, Green, Blue, Blue/Gray, Brown, White/Gray or Tan. Plain Black also available. Excellent for use in weight rooms, ice rinks, aerobic studios, children's play areas, grocery store produce areas, walking tracks, schools and community centers. Standard thicknesses of 1/4", 5/16", 3/8" or 1/2" (1/2" available in roll goods only).

Glue-down applications should be installed with our PU350 Adhesive.



ROLL GOODS			
Stock No.	Thickness	Width	Weight
RSFR6	1/4"	48"	1.4 lb./sq. ft.
RSFR8	5/16"	48"	1.8 lb./sq. ft.
RSFR9	3/8"	48"	2.0 lb./sq. ft.
RSFR12	1/2"	48"	2.7 lb./sq. ft.



INTERLOCKING TILES			
Stock No.	Thickness	Size	Weight
RSFT6	1/4"	21.75" x 21.75"	4.8 lbs. each
RSFT8	5/16"	21.75" x 21.75"	6.5 lbs. each
RSFT9	3/8"	24" x 24"	8.8 lbs. each

Higher percentage background color product available in a variety of colors. Contact our sales department for more information.

21.75"x21.75" tiles cover 3.28 square feet per tile. There is a 200 square foot minimum (61 tiles) on all 21.75"x21.75" tiles. Not all sizes/thicknesses are available in all colors and color percentages. Check with customer service or our website for more information.

PHYSICAL FITNESS MAT



A compression molded rubber mat made of 95% post consumed recycled rubber designed to withstand the heavy activity of physical fitness facilities. Puncture resistant - even under ice skates and track shoes. Free standing mats lie flat without adhesive. Durometer reading of 50 ± 5.

Ideal in areas used for exercise, weightlifting, exercise machines and ice rink off-area flooring. Supplied as molded; edges not cut for butting; will require trimming if butted together to cover large areas.

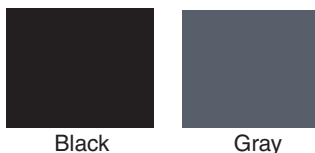
Black Color only.

Stock No.	Thickness	Size	Weight
FIT-500	3/8"	4' x 6'	60 lbs. ea.

GOOSEBUMP AEROBIC TILES



Solid version of our Cushion Tiles for use in aerobic rooms, weight rooms and multipurpose rooms. Made from recycled PVC vinyl, this 11.84"x11.84" interlocking tile is easy to install. The non-abrasive installation allows more flexibility. Beveled border pieces and corners are available; available in Black or Gray.

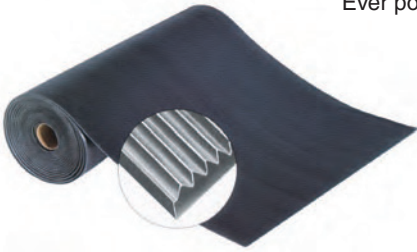


Black

Gray

RUNNER MATTING

STANDARD CORRUGATED RUNNER MATTING – All Rubber



Ever popular narrow corrugated surface design.

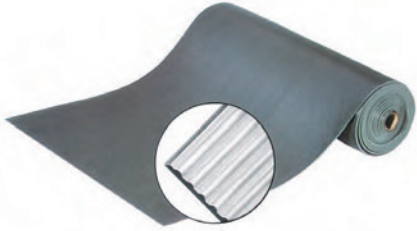
A top quality heavy gauge standard all rubber matting that reduces noise, accidents, fatigue and maintenance. This rotary cured matting has a smooth plate back finish; won't curl, shrink or separate. Good abrasion resistance; sound absorbing, flexible rubber construction stays in place and is slip-resistant.

Stock No.	Color	Roll Size	Approx. Size	Approx. Wt. Lin. Ft.
M1606	Black	75 ft. or 150 ft.	1/8" x 24"	1.7 lbs.
M1601	Black	75 ft. or 150 ft.	1/8" x 36"	2.5 lbs.
M1603	Black	75 ft.	1/8" x 48"	3.4 lbs.

Available in standard rolls or cut to exact length desired.

EASY SWEEP RIB RUNNER MATTING – Vinyl

GREASE AND OIL RESISTANT – NO FABRIC



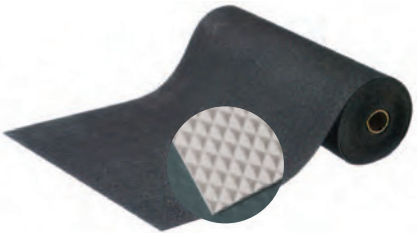
Non-fading superior aging properties make this oil, grease, chemical and stain resistant matting a popular item. Non-combustible; tear, cut, impact and ozone resistant; high tensile strength and elongation properties; single piece rolls. Use inside or outside. Round ribbed corrugations run lengthwise, easily cleaned with soap and water.

Stock No.	Color	Roll Size	Approx. Size	Approx. Wt. Lin. Ft.
M711	Black	105 ft.	1/8" x 24"	1.3 lbs.
M712	Black	105 ft.	1/8" x 36"	2.0 lbs.
M713	Black	105 ft.	1/8" x 48"	2.7 lbs.

Available in standard rolls or cut to exact length desired.

PYRAMID RUNNER MATTING – Vinyl

GREASE AND OIL RESISTANT – NO FABRIC



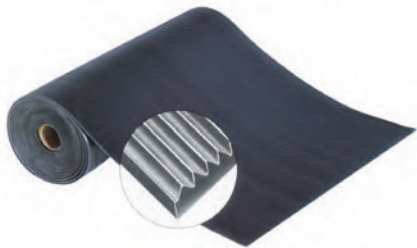
Non-fading, superior aging properties, now in a cross-corrugated pyramid surface; non-directional; resulting in a slip resistant vinyl runner. Resists many oils and greases; non-combustible; tear, cut and impact resistant; ozone resistant; high tensile strength; outwears rubber single piece rolls. Reduce maintenance costs; easily cleaned with soap and water.

Meets flammability requirements of motor vehicle standard #302.

Stock No.	Color	Roll Size	Approx. Size	Approx. Wt. Lin. Ft.
M7736	Black	105 ft.	1/8" x 36"	2.2 lbs.
M7748	Black	105 ft.	1/8" x 48"	3.0 lbs.

Available in standard rolls or cut to exact length desired.

STANDARD CORRUGATED RUNNER MATTING – Heavy Duty Rubber



Top quality all rubber for longer wear and size stability. Its design and compound help reduce noise, fatigue and maintenance; ideal for heavy traffic, stores, factories, warehouses, ramps. The all rubber construction stays in place and is slip resistant. With care, lightweight carts can be used over this runner.

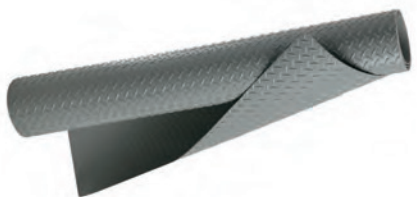
Standard narrow corrugated surface for heavy use.

Black color only.

Stock No.	Roll Size	Approx. Size	Approx. Wt. Lin. Ft.
M301	75 ft.	1/4" x 24"	4.0 lbs.
M302	75 ft.	1/4" x 36"	6.0 lbs.
M303	75 ft.	1/4" x 48"	8.0 lbs.

Available in standard rolls or cut to exact length desired.

DIAMOND PLATE RUNNER – YELLOW EDGES – Vinyl



A deep embossed steel-deck design vinyl runner with Safety Yellow Borders for high visibility. For walkways, ramps and traffic patterns in factories and commercial buildings. Resists most beverages, oils, common industrial chemicals and cleansers. Stain resistant, flame retardant and self extinguishing. Provides extra safety for walkways. Cleans easily.

Meets flammability requirements of motor vehicle safety test #302 (49 CFR 571302)

5/32" thick, Black Color with Safety-Yellow borders on both long edges; or Plain Black, Plain Gray with no borders.

Stock No.	Approx. Width	Approx. Roll Size	Approx. Wt. Lin. Ft.
SDP93	36"	75'	2.0 lbs.
SDP94	48"	75'	3.0 lbs.



Black

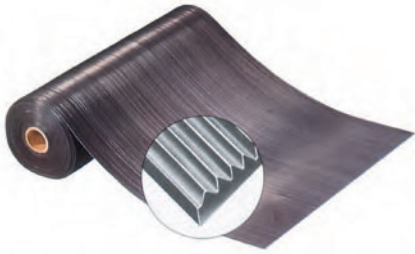


Gray

Runner mattings are not intended to be cemented down or used as a flooring product. All runner mattings are intended for pedestrian traffic only.

MISCELLANEOUS MATTING PRODUCTS

VINYL SWITCHBOARD RUNNER MATTING



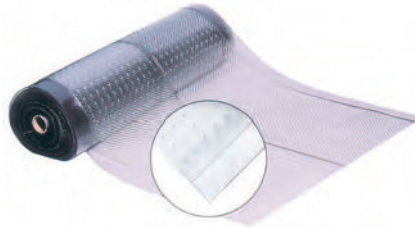
Black top quality standard corrugated surface switchboard matting. All matting is completely tested throughout so it meets ASTM Specifications. Meets: Dielectric Test Volt, RMS AC 30,000; Proof Test Volt, RMS AC 20,000; Recommended Maximum Use Volt, RMS AC 17,000. Conforms to ANSI/ASTM D178 J6.7 Type II, Class 2. (With care, light carts can be rolled over this runner.)

Fully Meets ASTM specifications – branded on back
Black color only.

Stock No.	Roll Size	Approx. Size	Approx. Wt. Lin. Ft.
KV256	75'	1/4" x 36"	5.0 lbs.

Available in standard rolls or cut to exact length desired.

CLEAR VINYL GRIPPER MATTING



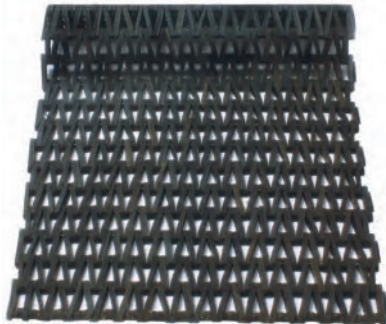
Keep carpeting like new, yet see the colors. Clear Vinyl with molded-in grippers on the underside of each square foot of ribbed area; anchors into most tufted, loop or woven carpets. Stays in position better than smooth back runners. Angular ribbed surface with clear feathered edge border. Wipes clean, heels won't puncture.

For use on commercial, industrial, institutional or residential carpeted floors.

Stock No.	Thickness	Std. Roll Size	Approx. Wt. Lin. Ft.
K2700	3/32"	27" x 60 ft.	1.2 lbs.
K3600	1/8"	36" x 60 ft.	1.7 lbs.
K4800	1/8"	48" x 60 ft.	2.2 lbs.

Available in 60 ft. rolls or cut to exact length desired.

FABRIC-TIRE LINK MATS



A durable herringbone weave design mat of rubberized fabric-tire links. Ideal for schools, industrial or factory entrances; factory or kitchen fatigue mats. Links are 2-3/4" long woven on galvanized steel rods. Wires should run the short dimension; easily rolled for cleaning. Custom made up to 8 ft. wide; Black beveled or Square Nosing available. For exact size mats, nosing must be attached. Recess mats must have square nosing on all four sides.

Approximately 5/8" thick – Natural gray-black color.

Stock Sizes – (No nosing attached.)

Stock No.	Approx. Size	Std. Pkg.	Approx. Wt. Ea.
#3	17" x 25"	12	7 lbs.
#4	20" x 30"	6	9 lbs.
#6	24" x 36"	4	16 lbs.
#10	30" x 48"	3	23 lbs.
#13	30" x 60"	2	29 lbs.
#18	36" x 72"	2	41 lbs.

Custom sizes available with square or beveled nosing up to 8 foot wide x any length; we do not recommend over 72 square feet per section.

DURA-RUG FLUFFED-TIRE LINK MATS



A durable, carpet-like surface of rubberized fabric-tire links; wipes off dust, dirt and moisture. Ideal for schools; industrial or factory entrances; kitchen use; bowling lanes; skating rinks. Use in front of machines, along assembly lines, in aisles. Mats reduce fatigue; allow drainage of liquids; trap dirt; roll up for cleaning. Use for spike shoe traffic in pro shops or locker rooms. Links are 2-1/2" long straight weave design woven on galvanized steel rods. Custom made up to 8 ft. wide; Black beveled or Square Nosing available. For exact size mats, nosing must be attached. Recess mats must have square nosing on all four sides.

Approximately 3/4" thick – Natural gray-black color.

Stock Sizes – (No nosing attached.)

Stock No.	Approx. Size	Std. Pkg.	Approx. Wt. Ea.
403	17" x 25"	12	8 lbs.
404	20" x 30"	6	10 lbs.
406	24" x 36"	4	15 lbs.
410	30" x 48"	3	25 lbs.
413	30" x 60"	2	33 lbs.
418	36" x 72"	2	45 lbs.

Custom sizes available with square or beveled nosing up to 8 foot wide x any length; we do not recommend over 72 square feet per section.

FINGER SCRAPER MATS



A molded one piece mat of top quality rubber. The cushioning action of this resilient rubber mat makes it an ideal entrance or anti-fatigue mat. Beveled edges help minimize tripping. Sculptured back helps prevent movement on floor.



Thousands of flexible finger-wipers brush dirt from footwear with squeegee-like action. Dirt is neatly concealed out of sight in a leak proof tray, is easily removed by shaking or hosing. Sculptured back helps prevent movement.

1/2" thick - Black color only

Stock No.	Approx. Size	Std. Pkg.	Weight Per Mat
NFS-232	24" x 32"	1	10 lbs.
NFS-329	32" x 39"	1	17 lbs.
NFS-372	36" x 72"	1	36 lbs.