

EDEN EXPRESSIONS GRANITE COLLECTION

18" x 18" Luxury Vinyl Tiles



A LONG-LASTING, LOW-MAINTENANCE FLOOR COVERING WITH A WARM AMBIANCE

Eden Expressions Granite Collection combines the beauty and feel of granite with the durability required for high-traffic commercial applications.

KEY BENEFITS & FEATURES:

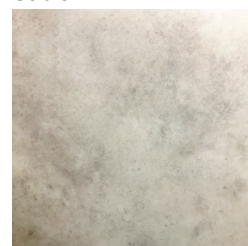
- Ten stone and stained concrete patterns available in 18" x 18" or 18" x 36" tile*
- Heat-treated construction creates excellent dimensional stability
- Superior resistance to high traffic with a 40 mil ceramic-bead wear layer surface
- Easy to maintain with no special waxes, sealers, dressings or other finishes required to maintain its appearance, reducing labor and chemical costs
- Elimination of sealers and finishes reduces exposure to VOCs as chemicals dry
- Custom options available to meet your individual design needs



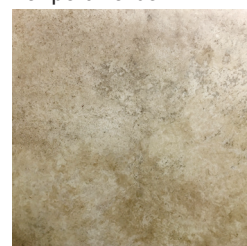
Sable



Fairport Harbor



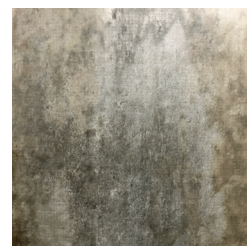
Cuyahoga Shale



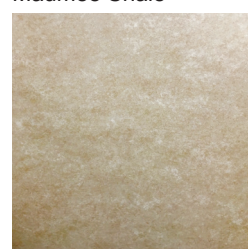
Conneaut Stone



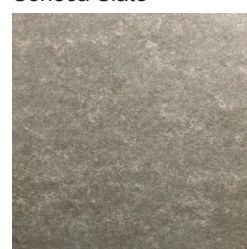
Maumee Shale



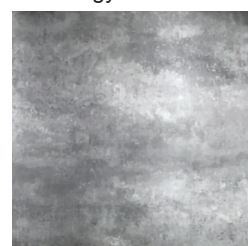
Seneca Slate



Olentangy Limestone



Ash Cave Slate



Toledo Iron*



Huron Ore*

*Toledo Iron and Huron Ore also available in 18" x 36" tile.



**THE R.C.
MUSSON RUBBER CO.**

1320 East Archwood Ave • P.O. Box 7038 Akron, OH 44306
330-773-7651 • 800-321-2381
info@mussonrubber.com • www.mussonrubber.com

DIVISION

9

SPECIFICATIONS

EDEN EXPRESSIONS GRANITE COLLECTION Luxury Vinyl Tiles

Suggested Uses

Beauty Salons, Conference Rooms, Corporate Lunchrooms, General Office, Hospitals, Libraries, Pharmacies, Retail/Department Stores, Resorts, Restaurants, Spas and Supermarkets

Overall Thickness 3.175mm • 0.125"

Wear Layer Thickness 1.0mm • 40mil

Tile Size 18" x 18" or 18" x 36" (where indicated)

Limited Warranty

Full Commercial Warranty 21 years

Summary of Warranty

**For a copy of the full warranty please ask for a warranty sheet*

Eden Expressions tiles must be professionally installed to validate the warranty. R.C. Musson warrants Granite style first quality tiles against wear for a period of 16 years in a commercial application, and 20 years in a residential application. This warranty applies only to material that is properly installed and maintained, while being used as intended and recommended. If the defect is covered by this warranty and is reported to R.C. Musson within the Warranty period, Musson will supply new material of same or similar grade to repair or replace the defective material.

- **Wear**
Defined as complete removal of wear layer, pattern and color due to wear from normal traffic and maintenance. If the wear occurs within 16 years from date of purchase, Musson will provide replacement materials or repair, of only the effected area.
- **Manufacturing Defects**
Musson warrants style Granite first quality tile materials are free from manufacturing defects and will replace defective floor covering and reasonable installation costs for a period of up to one [1] year from date of purchase. Musson will not pay labor costs to repair or replace materials that defects were apparent before or at the time of installation.
- **Other Limitations**
 - This warranty is non-transferable
 - Manufacturing defect must be reported within 3 months from date of purchase.
 - This Warranty covers only properly installed & maintained floors
 - Musson excluded and will not pay for any consequential or incidental expenses.
 - Musson reserves the right of final judgment and may refuse claims in certain instances.

Packing & Dimensions

Tile 18" x 18": 16 tiles/carton
Tile 18" x 36": 8 tiles/carton
Sq. Ft. per carton: 36 sq. ft.
Overall Thickness 3.175mm • 0.125"
Wear Layer Thickness 1.0mm • 40mil
Weight: 35.78 lbs./carton

Technical Specs (ASTM 1700-99)

| | |
|--|------------------------------------|
| Stability (ASTM 1514) | Pass |
| Abrasion (ASTM D3389) | Excellent (<0.15g/1000 cycles) |
| Static Load (ASTM F970 - Modified) | 2000 psi |
| Sound Insulation (DIN 52210) | 4dB |
| Slip Resistance (ASTM D 2047) | Pass (Exceeds ADA Recommendations) |
| Stain & Chemical Resistance (ASTM 925) | Pass |
| Light Resistance (F 1515) | Pass |
| Residual Indentation (F 1914) | Pass (<8%) |

Flammability Rating

| | |
|-----------------------------|-----------------|
| Fire Resistance (ASTM E648) | Class 1 |
| Smoke Density (ASTM E662) | Pass (<450 sdi) |
| Heat Stability (ASTM 1514) | Pass |
| HUD/FHA Requirements | Exceeds |

Installation

Surface Preparation: Sub floor (wood or concrete) must be structurally sound, clean, smooth, dry free from dust, dirt, wax, grease, and/or any other foreign material that would interfere with a good bond. DO NOT USE adhesives where moisture is present in concrete or wood-type sub floors. Moisture may retard or prevent adhesive from setting.

Primer: Latex primer acts like a sealer but allows adhesion of the tiles to the concrete floors. It also helps preventing moisture from getting between the tiles and sub floor.

Tools required: Utility knife, carpenter square, chalk, string, pencil and rolling pin.

Installation Guide

Granite style tiles and adhesive must be conditioned at room temperature, minimum 65°F for 24 hours before and 24 hours after installation. Spread adhesive with a 1/16" X 1/16" X 1/16" square-notch trowel. Apply adhesive to sub floor according to the instructions on the container. Spread adhesives to small areas to avoid letting the adhesive dry too much before you have finished laying your tile. For tiles use the wet set installation instructions. Roll each section immediately upon completing with a 100 pound three-section roller. Re-roll the entire floor after one or two hours. If you do not have access to a roller, then use a rolling pin and your body weight. Do not wash or treat the floor for a minimum of 48 hours after installation.

Maintenance

We recommend using a non-rising cleaner that leaves no film and suggest that you vacuum, sweep or dust mop twice per week. Hi-traffic areas might require more frequent cleaning.

Wipe up food and other spills immediately using recommended cleaner and a soft cloth. You should NEVER USE ABRASIVE CLEANERS, POWDERS, OIL CLEANERS, WAXES OR DISH DETERGENT. These will scratch the surface or leave a film.

When using a vacuum, if possible turn off the beater and use a hose or wand with an upholstery attachment. Vacuum wheel may also be a source for indenting and scuffing, check the wheels for embedded grit.

To remove scuff marks you can use a soft cloth to rub it out. If they difficult to remove try using a product named "Oops Painter Wipes". Rinse the area well afterwards with clean warm water and allow to dry. Please note that these procedures may help remove stains from vinyl floors, but cannot guarantee complete removal. Burns, holes or "permanent" stains may require a replacement "patch of that section of the floor.

To remove damaged tiles you can use a hair dryer, which heats up the adhesive allowing the tile to be picked up. When the tile is up, use a wide blade putty knife and pull it out, then put the new tile down once the surface has been prepared. You should NEVER USE A HEAT GUN as this emits too much heat and will damage the tiles.

IMPORTANT NOTICE

Sample swatches have been cut from an overall design, decoration & shade may vary. The random nature of wood and other natural materials from which our patterns are designed means that significant color and design variation is normal and enhances the extraordinary look of Granite tiles.



**THE R.C.
MUSSON RUBBER CO.**

1320 East Archwood Ave • P.O. Box 7038 Akron, OH 44306

330-773-7651 • 800-321-2381

info@mussonrubber.com • www.mussonrubber.com