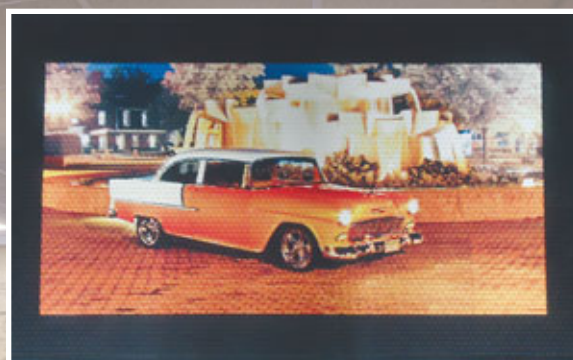


MUSSON'S *Floor Show*

Featuring Commercial, Institutional and Industrial **MATting**



For more info on these
and other flooring products,
visit our website at
www.mussonrubber.com



MUSSON RUBBER CO.

INDEX

CARPET MATS, VINYL BACK

Spectra-Deluxe Olefin	Page 2
Spectra-Uptown.	Page 2
Spectra-Rib Olefin.	Page 3
Spectra-Chevron	Page 3
Spectra-Soaker	Page 3
Spectra Cross-It	Page 4
Spectra Walk-In.	Page 4
Grand Premier.	Page 4
Tri-Grip Nylon	Page 5
Classic Impressions Logo.	Page 5
Classic Impact Logo	Page 5

ANTI-FATIGUE MATS

Sof-Spun/Footlover	Page 6
Super Sof-Spun.	Page 6

ANTI-FATIGUE MATS

Pyramid Slotted Cushion-Dek	Page 6
Foot Comfort	Page 7
Diamond-Plate Vinyl Fatigue.	Page 7
Cushion-Lok	Page 7
Cushion Tiles.	Page 8
Kitchen/Cushion Mats	Page 8
Workstation-Plus Mats	Page 8

FITNESS/WEIGHTROOM MATS

Rubber Sport Floor	Page 9
Physical Fitness Mats	Page 9
Goosebump Tiles	Page 9

OTHER

Recycled Rubber Pavers.	Page 10
---------------------------------	---------

ENTRANCE/SCRAPER MATS

Superscrape Impressions	Page 10
Finger Scraper Mats	Page 10

RUNNER MATTING

Standard Corrugated Rubber	Page 11
Easy Sweep Vinyl	Page 11
Pyramid Vinyl	Page 11
Heavy-Duty Corrugated Rubber	Page 11
Diamond Plate Vinyl	Page 11
Vinyl Switchboard	Page 12
Clear Vinyl Gripper	Page 12

LINK MATS

Fabric-Tire Rubber Link Mats	Page 12
Dura-Rug Rubber Link Mats	Page 12

SPECTRA-DELUXE OLEFIN CARPET MATS



Water Absorption	Soil Retention	Wearability	Sunlight Fade Resistance	Stain Resistance
V-Good	V-Good	V-Good	Best	V-Good



Castellan Red Pebble Brown Marlin Blue



Charcoal Gray Evergreen Burgundy Black

- 17 oz. of 100% continuous filament solution dyed olefin yarn per square yard fused to a 65 mil durable solid vinyl back.
- Traps over one gallon of water per square yard; dries faster than conventional carpet mats to lessen slippery hazard.
- Repels stains to maintain mat's original beauty; clean with vacuum, hose or broom.
- Made in the U.S.A.

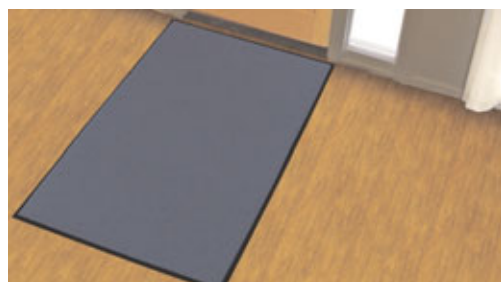
SPECTRA-DELUXE MATS—approx. 1" vinyl border on all four sides.

Stock No.	Approx. Size	Std. Ctn.	Weight
SD23	24" x 36"	1 per ctn.	4 lbs.
SD34	36" x 48"	1 per ctn.	8 lbs.
SD35	36" x 60"	1 per ctn.	10 lbs.
SD36	36" x 72"	1 per ctn.	12 lbs.
SD46	48" x 72"	1 per ctn.	16 lbs.
SD48	48" x 96"	1 per ctn.	22 lbs.
SD310	36" x 120"	1 per ctn.	20 lbs.
SD410	48" x 120"	1 per ctn.	27 lbs.

SPECTRA-DELUXE RUNNERS—36", 48" or 72" wide—available in cut lengths or full rolls of approx. 60 ft. Approx. 1" vinyl border on both long edges. (Edging can be attached to cut ends.)

Stock No.	Approx. Width	Approx. Roll Size	Wt. Per Lin. Ft.
SDR36	36"	60 ft.	2.0 lbs.
SDR48	48"	60 ft.	2.7 lbs.
SDR72	72"	60 ft.	4.1 lbs.

SPECTRA-UPTOWN DECALON CARPET MATS



Navy Charcoal Brown Red/Black Hunter Green Burgundy

- 40 oz. of tufted Decalon® yarn fused to a heavy-duty 85 mil vinyl backing.
- Unique high-low looped pile provides functionality for drying and retaining moisture and debris while offering an upscale, elegant look.
- Made in the U.S.A.

SPECTRA-UPTOWN MATS – approx. 1" vinyl edging on all four sides.

Stock No.	Approx. Size	Std. Ctn.	Weight
SU23	24" x 36"	1	5 lbs.
SU34	36" x 48"	1	10 lbs.
SU35	36" x 60"	1	13 lbs.
SU36	36" x 72"	1	16 lbs.
SU46	48" x 72"	1	21 lbs.
SU48	48" x 96"	1	28 lbs.
SU310	36" x 120"	1	26 lbs.
SU410	48" x 120"	1	35 lbs.

SPECTRA-UPTOWN RUNNERS – 36", 48" or 72" wide – available in cut lengths or full rolls of approx. 60 ft. Approx. 1" vinyl border on both long edges. (edging can be attached to cut ends.)

Stock No.	Approx. Size	Weight
SUR36	36" x 60 ft.	2.6 lbs. lin. ft.
SUR48	48" x 60 ft.	3.5 lbs. lin. ft.
SUR72	72" x 60 ft.	5.2 lbs. lin. ft.

SPECTRA-RIB OLEFIN CARPET MATS



Water Absorption V-Good
 Soil Retention V-Good
 Wearability V-Good
 Sunlight Fade Resistance Best
 Stain Resistance V-Good



Green



Charcoal



Red



Brown



Gray



Beige



Blue

- 26 oz. of deep rib 100% Polypropylene needle punch fibers per square yard permanently fused to a 75 mil solid vinyl backing.
- Scrapes shoes clean; is easily cleaned with a vacuum, hose or broom.
- Use inside or outside; stands up to the toughest foot traffic situations.
- Made in the U.S.A.

SPECTRA-RIB MATS—approx. 1" vinyl border on all four sides. Ribs run parallel to long dimension of mats.

Stock No.	Approx. Size	Std. Ctn.	Weight
SR23	24" x 36"	1	5 lbs. ea.
SR34	36" x 48"	1	9 lbs. ea.
SR35	36" x 60"	1	12 lbs. ea.
SR36	36" x 72"	1	15 lbs. ea.
SR46	48" x 72"	1	18 lbs. ea.
SR48	48" x 96"	1	24 lbs. ea.
SR310	36" x 120"	1	23 lbs. ea.
SR410	48" x 120"	1	30 lbs. ea.

SPECTRA-RIB RUNNERS—36", 48" or 72" wide—available in cut lengths or full rolls of approx. 60 ft. Approx. 1" vinyl border on both long edges. (Edging can be attached to cut ends.) Ribs run parallel to long dimension of roll.

Stock No.	Approx. Width	Approx. Roll Size	Wt. Per Lin. Ft.
SRR36	36"	60 ft.	2.2 lbs.
SRR48	48"	60 ft.	2.9 lbs.
SRR72	72"	60 ft.	4.4 lbs.

SPECTRA-CHEVRON POLYPROPYLENE



- Decorative chevron design brushes dirt and moisture from shoes with multi-directional action; retains moisture, channels away dirt.
- 26 oz. of 100% polypropylene needle punch fibers per square yard is fused to a 75 mil heavy duty solid vinyl backing.
- Deep, rich colors add beauty to entryway.
- Made in the U.S.A.

Mats: Approx. 1" vinyl border on all four sides.

Stock No.	Approx. Size	Std. Ctn.	Weight
SCP23	24" x 36"	1	4 lbs. ea.
SCP34	36" x 48"	1	9 lbs. ea.
SCP35	36" x 60"	1	12 lbs. ea.
SCP36	36" x 72"	1	14 lbs. ea.
SCP46	48" x 72"	1	19 lbs. ea.
SCP48	48" x 96"	1	25 lbs. ea.
SCP310	36" x 120"	1	23 lbs. ea.
SCP410	48" x 120"	1	31 lbs. ea.

Runners: Full Rolls or Cut Lengths, vinyl border on both long edges. (Edges can be attached to cut ends.)

Stock No.	Approx. Size	Weight
SCPR48	48" x 60 ft.	2.3 lbs. lin. ft.
SCPR36	36" x 60 ft.	3.1 lbs. lin. ft.
SCPR72	72" x 60 ft.	4.6 lbs. lin. ft.



Charcoal Brown Blue Green Burgundy

SPECTRA-SOAKER POLYPROPYLENE



- 100% premium polypropylene with a durable fabric border.
- 24 oz. per square yard of dual-denier polypropylene yarn secured to a 100% SBR rubber back.
- Raised rubber edge forms a tray to hold water and dirt.
- Special gripper rubber backing.
- Polypropylene fibers dry quickly; mats retain their vivid color appearance.
- Made in the U.S.A.

Colors: Charcoal, Dk. Brown, Med. Brown, Med. Gray, Red, Navy, Bordeaux, Evergreen.

Mats: Stock Sizes only with perimeter molded lip.

Stock No.	Approx. Size	Std. Ctn.	Weight
SSP23	23" x 35"	1	5 lbs. ea.
SSP34	35" x 45"	1	9 lbs. ea.
SSP35	35" x 59"	1	12 lbs. ea.
SSP38	35" x 96"	1	18 lbs. ea.
SSP46	45" x 69"	1	18 lbs. ea.
SSP48	46" x 96"	1	23 lbs. ea.
SSP68	70" x 95"	1	35 lbs. ea.
SSP310	35" x 116"	1	21 lbs. ea.
SSP410	45" x 116"	1	29 lbs. ea.

Custom Sizes Available

SPECTRA CROSS-IT OLEFIN/POLYPROPYLENE



Brown Green Blue Gray

- A wiper/scrapper mat – for outer lobby use – removes dirt & moisture before it enters facility.
- 19 oz. per square yard of continuous filament olefin loop pile yarn combined with polypropylene ribbon yarn all fused to an 80 mil solid vinyl backing.
- Crush resistant – holds dirt & moisture beneath the surface of yarn.
- Vibrant colors retain their luster – colors match Spectra Walk-In mats.
- Made in the U.S.A.

Mats: Approx. 1" vinyl border on all four sides.

Stock No.	Approx. Size	Std. Ctn.	Weight
SCI23	24" x 36"	1	6 lbs. ea.
SCI34	36" x 48"	1	11 lbs. ea.
SCI35	36" x 60"	1	14 lbs. ea.
SCI36	36" x 72"	1	17 lbs. ea.
SCI46	48" x 72"	1	21 lbs. ea.
SCI48	48" x 96"	1	27 lbs. ea.
SCI310	36" x 120"	1	23 lbs. ea.
SCI410	48" x 120"	1	31 lbs. ea.

Runners: Full Rolls or Cut Lengths; vinyl border on both long edges. (Edging can be attached to cut ends.)

Stock No.	Approx. Size	Weight
SCIR36	36" x 60 ft.	2.5 lbs. lin. ft.
SCIR48	48" x 60 ft.	3.3 lbs. lin. ft.
SCIR72	72" x 60 ft.	5.0 lbs. lin. ft.

SPECTRA WALK-IN OLEFIN



Brown Green Blue Gray

- A premium olefin wiper mat – for interior use – the last defense against dirt and moisture.
- 19 oz. per square yard of continuous filament olefin yarn in a loop pile construction all fused to an 80 mil solid vinyl backing.
- Crush resistant – absorbs moisture yet dries quickly.
- Vibrant colors retain their luster – colors match Spectra Cross-It mats.
- Made in the U.S.A.

Mats: Approx. 1" vinyl border on all four sides.

Stock No.	Approx. Size	Std. Ctn.	Weight
SWI23	24" x 36"	1	5 lbs. ea.
SWI34	36" x 48"	1	10 lbs. ea.
SWI35	36" x 60"	1	13 lbs. ea.
SWI36	36" x 72"	1	15 lbs. ea.
SWI46	48" x 72"	1	20 lbs. ea.
SWI48	48" x 96"	1	27 lbs. ea.
SWI310	36" x 120"	1	25 lbs. ea.
SWI410	48" x 120"	1	34 lbs. ea.

Runners: Full Rolls or Cut Lengths; vinyl border on both long edges. (Edging can be attached to cut ends.)

Stock No.	Approx. Size	Weight
SWIR36	36" x 60 ft.	2.5 lbs. lin. ft.
SWIR48	48" x 60 ft.	3.3 lbs. lin. ft.
SWIR72	72" x 60 ft.	5.0 lbs. lin. ft.

GRAND PREMIER



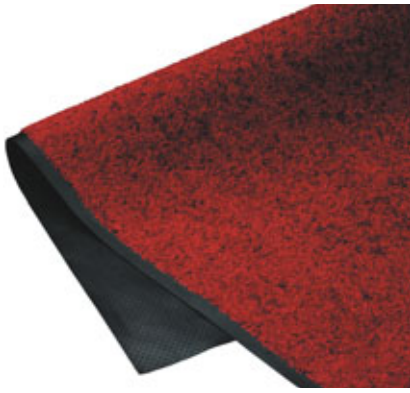
Grand Premier is an amazing mat series that features an innovative rubber-reinforced face design for added beauty and performance and a fashion border constructed of the same 100% polypropylene fiber system as the mat surface for an attractive look that is easy to maintain.

Grand Premier's unique, diamond shaped face pattern is available in seven well balanced colorways, creating the ultimate visual appearance. The face design can be configured three different ways - a half oval pattern alone, a rectangle with the half oval on one end, and a rectangle with half an oval on each end. And mats come in 13 standard sizes.



Available in 5 Half Oval One End sizes, 5 Half Oval Both End sizes, and 3 Half Oval sizes. For available sizes, visit our website link at http://www.mussonrubber.com/products/mats/carpet/grand_premier.htm.

TRI-GRIP NYLON



STOCK NO.	APPROX. SIZE	WEIGHT
TG23	24" x 35"	4 lbs. ea.
TG34	35" x 47"	7 lbs. ea.
TG35	35" x 59"	9 lbs. ea.
TG36	35" x 69"	10 lbs. ea.
TG38	35" x 95"	12 lbs. ea.
TG46	45" x 69"	14 lbs. ea.
TG48	45" x 95"	18 lbs. ea.
TG310	35" x 118"	17 lbs. ea.
TG410	45" x 118"	22 lbs. ea.

RUNNERS: Special non-seamed sizes are available in 3' and 4' widths up to 40' in whole foot increments, in select colors. Available 3', 4', 5' and 6' wide; limited colors available in 5' and 6' wide.

Heavy, 100% static dissipative nylon face offers outstanding absorption and durability. Tight, heat-set, Ultra-Twist™ yarn construction resists packing and crushing. Dirt filters into the mat rather than remaining on top. Molded rubber backing resists curling and cracking in all types of weather. Available in flat, gripper and suction backing types. Also available with oil and grease resistant 100% Nitrile Rubber backing when applications call for additional protection. Passes flammability standard DOC-FF-1-70.



125 Midnight Blue	114 Platinum	102 Browntone	126 Autumn Brown
121 Solid Red	131 Stardust Grey	103 Cabot Grey	127 Burgundy Berry
119 Emerald Green	141 Cranberry	132 Suede	128 Steel Blue
113 Charcoal	109 Chocolate	101 Red/Black	129 Glen Green
111 Grey	116 Navy	105 Dark Granite	

CLASSIC IMPRESSIONS



Turn any logo into a beautiful nylon entrance mat! Order as few as one mat—no set up charges. A new state-of-the-art digital process allows up to 24 colors on a single mat and the ability to create 3-D images.

Carpet is a plush, 100% tight two-ply-twist static dissipative nylon with stain stopper dye technology for excellent colorfastness. Premium rubber backing has tiny grippers for use on carpet or hard surfaces.

Sizes range from 2' x 3' to 6' x 40' with custom sizes available.

CLASSIC IMPACT LOGO MAT



A 24 ounce dye-injected Nylon carpet logo mat with a heavy-duty 70 mils PVC vinyl backing and 5/8" wide black border on all sides. This mat is excellent for use over all hard surfaces such as wood, marble, tile or concrete.

Available in the following standard sizes: 24"x36", 36"x48", 36"x60", 48"x72", 48"x96" and 60"x96". You can order as few as one mat; there are no set up charges.

*Oversize logo mats in other styles available.
Contact our sales department for information.*

SOF-SPUN VINYL SPONGE MATTING/FOOTLOVER VINYL SPONGE MATS



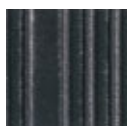
Ideal for commercial and industrial work areas; cashiers, check-outs, assembly lines, work stations, preparation tables, nurses stations, service counter, mailroom.

- A fatigue reducing comfortable barrier between floors and workers feet. 100% chemically blown polyvinyl chloride closed cell sponge offers a comfortable slip resistant surface to walk on or to stand; keeps employees off hard cold floors.
- 1/4" or 3/8" thick closed cell sponge improves worker productivity and morale; rounded edges reduce tripping hazard; improves safety.
- Mats lessen floor wear; cushion dropped tools or supplies; reduce noise and breakage. Resistant to many common fluids and chemicals.

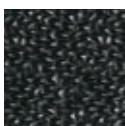
- Meets Dept. of Commerce Specs. DOC-FF-1-70.
- Made in the U.S.A.



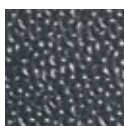
Black



Gray



Black



Gray

Rib top or pebble design surface; smooth back; vinyl closed cell sponge center; one piece material, not laminated; weighs 1/3 as much as solid rubber or vinyl matting.

Not recommended for use in kitchen cooking areas. Not warranted against damage from high heel shoes, chairs, stools, tables or castered wheels.

VINYL SPONGE RUNNERS—Available in cut lengths or full rolls of approx. 60 ft.

Colors: Black or Gray.

Stock No.	Thickness	Approx. Width	Weight per Lin. ft.
VC 2	3/8"	24"	1.4 lbs.
VC 3	3/8"	36"	2.1 lbs.
VC 4	3/8"	48"	3.8 lbs.
MVS 24	1/4"	24"	1.0 lbs.
MVS 36	1/4"	36"	1.5 lbs.
MVS 48	1/4"	48"	2.0 lbs.

Brown available in 3/8" only.

FOOTLOVER Stock Size Mat, all four edges sealed and beveled.

Stock No.	Thickness	Size	Weight
VC 6	3/8"	24" x 36"	4.6 lbs. ea.
VC 15	3/8"	36" x 60"	11.5 lbs. ea.

SUPER SOF-SPUN VINYL SPONGE MATS



Use for: Cashiers, Work Stations, Assembly Lines, Service Counters And Operator Platforms

Engineered extra thick mats offer comfort and relief for the person who stands all day.

- A full 5/8" thick vinyl sponge gives more comfort and added support for weary bones and muscles - relieves employee fatigue - enhances productivity.
- Industrial grade sponge has ribbed surface pattern for traction and durability - improves safety
- Edges are beveled to reduce tripping hazard.
- Made in the U.S.A.

Colors: Black or Gray.

Sizes: Stock sizes only, no custom cut lengths.

Stock No.	Thickness	Size	Weight
SFL23	5/8"	24" x 36"	8 lbs. ea.
SFL34	5/8"	36" x 48"	16 lbs. ea.
SFL35	5/8"	36" x 60"	20 lbs. ea.
SFL36	5/8"	36" x 72"	23 lbs. ea.
SFL46	5/8"	48" x 72"	31 lbs. ea.
SSV2	5/8"	24" x 30 ft.	78 lbs. ea.
SSV3	5/8"	36" x 30 ft.	117 lbs. ea.
SSV4	5/8"	48" x 30 ft.	156 lbs. ea.
SSV6	5/8"	72" x 30 ft.	235 lbs. ea.



Actual Size



5/8"



Black



Gray

Not recommended for use in kitchen cooking areas. Not warranted against damage from high heel shoes, chairs, stools, tables or castered wheels.

PYRAMID SLOTTED CUSHION-DEK Heavy Duty Vinyl Anti-Fatigue Matting



A new cross-corrugated distinctive pyramid surface helps prevent slipping in any direction. The soft resilient compound reduces fatigue, is quiet, and helps prevent breakage.

- Slip resistant, non-directional pyramid surface.
- Open slot design allows water through keeping top surface clean and dry.
- Studded bottom provides for drainage and air circulation.
- Soft vinyl compound offers superior cushioning.
- Exceptional wear and long life.
- beveled on both long edges.
- Resistant to most grease and oils.
- Made in the U.S.A.

Black color only. Approximately 7/16" thick.

1/2" x 2" open slots are spaced 2" apart, both width and length.

Available in standard rolls or cut to exact length desired.

Not recommended for use in kitchen cooking areas. Not warranted against damage from high heeled shoes, chairs, stools, tables, carts or castered wheels.

Stock No.	Approx. Width	Approx. Roll Size	Weight Lin. Ft.
56D24	24"	30'	2.6 lbs.
56D36	36"	30'	4.0 lbs.
56D48	48"	30'	5.2 lbs.

(beveled edging can be attached to cut ends if desired)

FOOT COMFORT ANTI-FATIGUE MATS



Do not work on the mat wearing high heeled shoes.
Do not place chairs, stools or tables on the mat.
Do not allow castered wheels on or to roll over the mat.
Mats are not intended for kitchen use.

Increase Efficiency and Productivity

Tired feet, aching back and sore legs impair performance. Fatigue can cause ill temper, carelessness and inefficiency. Unique construction prevents strain by distributing body weight. Mats provide insulation against cold floors - will pay for themselves with increased morale and productivity.

Improved Quality – Top to Bottom

Foot Comfort Mats feature a long wearing 1/8" thick rubber surface fused to a 3/8" vinyl foam base – a total of 1/2" cushioned thickness.

The vinyl sponge contains thousands of tiny air bubbles – you actually walk above air – offers comfortable cushioning and durability. beveled edges and rounded corners help mat hug the floor for added safety and comfort.

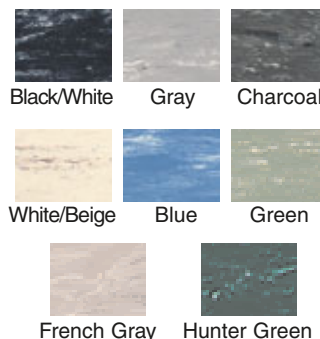
Technical Tips

Rubber surface resist all common acids and alkalis. They resist oil and grease and most organic solvents - if removed or wiped up promptly.

Standard Mat Sizes

Style	Size	Weight
"E"	18" x 30"	7 lbs. ea.
"F"	18" x 48"	11 lbs. ea.
"J"	24" x 36"	11 lbs. ea.
"H"	36" x 64"	29 lbs. ea.

Style	Size	Weight
HR24	24" x up to 60'	2.4 lbs. ft.
HR36	36" x up to 60'	3.6 lbs. ft.
HR48	48" x up to 60'	4.8 lbs. ft.



DIAMOND-PLATE VINYL FATIGUE MATS



Available in solid Black, solid Gray, Black with Yellow contrasting borders (longitudinal edges only).

- Heavy duty vinyl matting with a convex diamond surface pattern helps reduce slippage.
- A self-extinguishing, non-flammable composition that is also resistant to most fluids, oils, grease and chemicals if removed promptly.
- Contrasting color borders promote safety and awareness.
- All mats and runners have beveled edges on all four sides and rounded corners - to help hug the floor - reduces tripping hazard.
- 1/8" thick vinyl top is fused to a 1/2" thick industrial grade vinyl sponge - over-all thickness of mat is 5/8".

STANDARD SIZE MATS: All edges beveled, rounded corners.

Stock No.	Approx. Size	Weight
DPS24	24" x 36"	9 lbs. ea.
DPS36	36" x 60"	23 lbs. ea.

CUSTOM LENGTH MATS: All edges beveled, rounded corners.

DPS24-R	24" x up to 75 ft.	3.0 lbs. lin. ft.
DPS36-R	36" x up to 75 ft.	4.5 lbs. lin. ft.
DPS48-R	48" x up to 75 ft.	6.0 lbs. lin. ft.

CUSHION-LOK ANTI-FATIGUE MATS

Use heavy-duty durable cushioning for industrial plants; around machinery, assembly lines, work standing areas, tool cribs, behind counters.



A full 7/8" thick, heavy duty anti-fatigue mat, in stock sizes or custom made to fit your needs. Non-slip diamond top surface has 1/2" holes permitting liquids and waste products to fall through keeping surface clean and dry. Cushion-Lok provides a comfortable standing surface for workers who must be on their feet; reduces worker fatigue which increases morale, safety, and productivity; is oil and grease resistant. Made in the U.S.A.

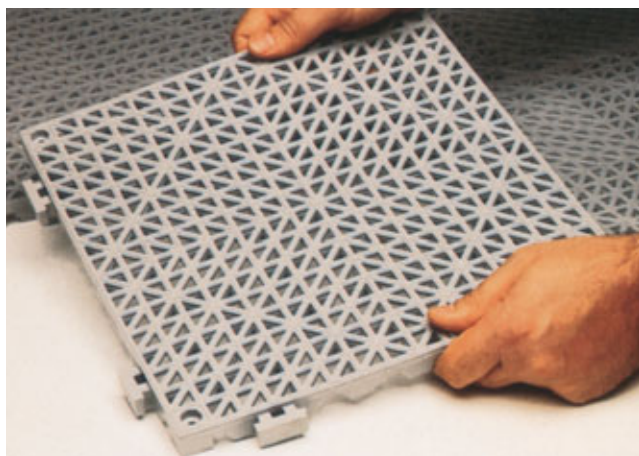
Black color field: Black or OSHA approved Safety Yellow beveled Ramps and Corners can be permanently attached to any or all edges.

CUSTOM SIZES – (made in even foot increments only), made to order with or without beveled ramps and corners on any or all sides. Beveled ramps and corners are 6" wide; available in Safety Yellow or Black color.

Custom made up to 6 ft. x 8 ft. in one piece – 2-1/2 lbs. per sq. ft.

Stock No.	Thickness	Size	Weight
172-Custom	7/8"	any size up to 6' x 8'	2.5 lbs. sq. ft.

CUSHION TILES



Cushion Tiles are ideal for industrial, commercial and sports applications. They offer comfort and protection. Each tile exposes over 1/3 of the floor below to the air; allows circulation to keep feet cool and comfortable.

Open grid design retards spread of mold, mildew and bacteria; resistant to sunlight, ultraviolet light, oils, solvents, acids and most chemicals. Easily trim to fit any area. No adhesive necessary.

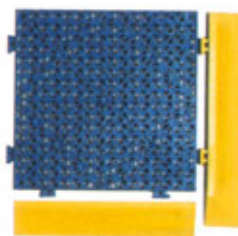
Modular tile can be taken apart and reassembled with minimum effort. beveled edging minimizes the possibility of tripping and allows use of wheeled carts.

Stock No.	Item & Size	Std. Pack	Weight Std. Pack
CT1212	Vinyl Cushion Tile	36 pcs.	55 lbs.
CT12G	Grit-Top Cushion Tile	36 pcs.	60 lbs.
CTBE	*beveled Edge, 11.84" long	1 pc.	1 lb.
CTBC	*beveled Corner, 13.63" long	1 pc.	1 lb.

*Beveled Edge and Corner also available in Safety Yellow Color.

*Beveled edging and beveled corner available in both male and female types. Specify which type when ordering.

MADE FROM RECYCLED PVC VINYL



11.84" beveled edges provides smooth transition between floor & tiles.

Use for:

Pools
Boats
Saunas
Showers
Marinas
Hot Tubs
Sun Rooms
Steam Rooms
Locker Rooms
Health Clubs
Workout Areas
Exercise Rooms



Also with recycled Carbide Grit Surface. Black Color only.

Cushion Tiles are 11.84" x 11.84" square; 3/4" thick; with a 1-1/2" square ribbed pattern. Made in the U.S.A. of flexible 100% recycled PVC plastic.



KITCHEN/CUSHION & ALL/PURPOSE MATS



Surface texture helps prevent slips; promotes easy drainage and increased cleanliness. Multi-knob back adds to comfort. Special compound fights growth of mold, mildew and odor causing bacteria. Has a hidden built-in connector strip on one side; easy to link mats together for area coverage.

Tile Red resilient Grease-Proof Rubber eases the fatigue of standing jobs in the kitchen or behind the bar.

Black resilient Grease-Resistant Rubber minimizes fatigue and stands up to machine tool cutting fluids and Industrial/commercial liquids.

Standard 36" x 36" size; easy to cover work areas, remove for cleaning.

Colors: Red is Grease-Proof; Black is Grease-Resistant.

Stock No.	Thickness	Approx. Size	Std. Pack	Weight
57154	3/4"	3' x 3'	1	21 lbs.
57156	3/4"	3' Bevel	1	2 lbs.
57158	3/4"	3' Bevel w/corner	2	2 lbs.

WORKSTATION-PLUS KITCHEN & ALL PURPOSE MATS



A 1/2" thick, grease-resistant rubber, lightweight anti-fatigue mat. Advanced design makes handling and cleaning easy. Provides foot comfort and traction. Mat has a unique bevel edge on all four sides to improve safety and allow wheeled traffic. Use in restaurants on the cooking line, dishwashing area, service counter, food prep or bar areas. Other uses: assembly lines, laboratories, service counters, work stations; when a job requires being on your feet.

Available in Grease-Resistant Black or Grease-Proof Gray.

Standard 3' x 5' size

Stock No.	Size	Color	Std. Pack	Weight
WP35B	3' x 5'	Black	1	30 lbs.
WP35G	3' x 5'	Gray	1	30 lbs.

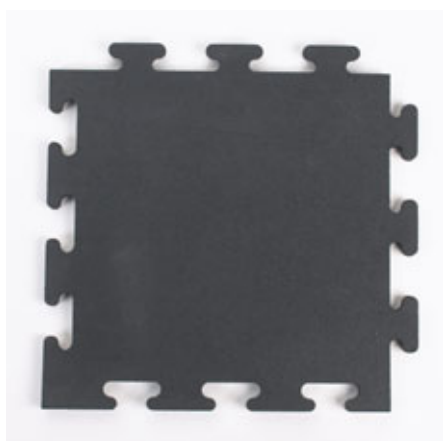
RUBBER SPORT FLOOR



A durable, spike-resistant floor made of recycled rubber combined with color flecks of new rubber to create an environmentally friendly, slip resistant sportsurface.

Rubber Sport Floor is available in 48" wide roll goods or 36" x 36" interlocking tiles. Rubber Sport Floor is made with a Black background and a 10% or 20% fleck of Red, Gray, Green, Blue, Eggshell, or Tan. Plain Black also available. Excellent for use in weight rooms, ice rinks, aerobic studios, children's play areas, grocery store produce areas, walking tracks, schools and community centers. Standard thicknesses of 1/4", 3/8" or 1/2".

Glue-down applications should be installed with our MUS2091 Adhesive.



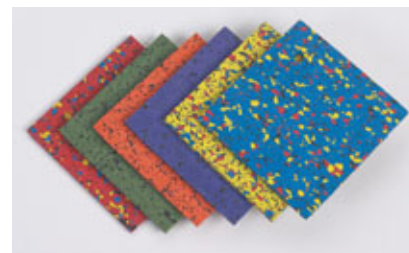
ROLL GOODS

Stock No.	Thickness	Size	Weight
RSFR14	1/4"	48" x 365' max.	1.5 lb./sq. ft.
RSFR38	3/8"	48" x 225' max.	2.3 lb./sq. ft.
RSFR12	1/2"	48" x 165' max.	3.0 lb./sq. ft.

INTERLOCKING TILES

Stock No.	Thickness	Size	Weight
RSFT-14	1/4"	*36" x 36"	14 lbs. each
RSFT-38	3/8"	*36" x 36"	23 lbs. each
RSFT-12	1/2"	*36" x 36"	29 lbs. each

*interlocking tiles cover 8 sq. ft. per tile
Tiles are also available square cut.



90% background color product available in a variety of colors. Contact our sales department for more information.

PHYSICAL FITNESS MAT



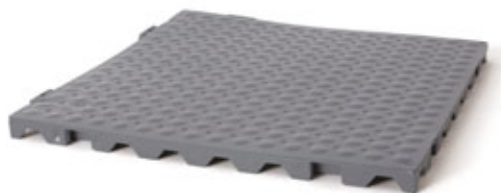
A compression molded rubber mat made of 95% post consumed recycled rubber designed to withstand the heavy activity of physical fitness facilities. Diamond plate pattern on both sides provides slip resistance cushioning; has excellent wearing and crack resistant properties. Puncture resistant - even under ice skates and track shoes. Free standing mats lie flat without adhesive. Durometer reading of 50 ± 5.

Ideal in areas used for exercise, weightlifting, exercise machines and ice rink off-area flooring. Supplied as molded; edges not cut for butting; will require trimming if butted together to cover large area.

Black Color only.

Stock No.	Thickness	Size	Weight
FIT-500	3/8"	4' x 6'	60 lbs. ea.
FIT-1000	1/2"	4' x 6'	74 lbs. ea.

GOOSEBUMP AEROBIC TILES



Solid version of our Cushion Tiles for use in aerobic rooms, weight rooms and multipurpose rooms. Made from recycled PVC vinyl, this 3/4"x11.84"x11.84" interlocking tile is easy to install. The non-abrasive installation allows more flexibility. Beveled border pieces and corners are available; custom colors available.



Black

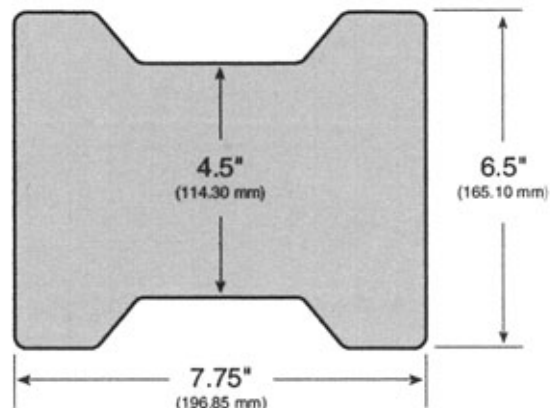


Gray

RECYCLED RUBBER PAVERS



Molded from 100% recycled rubber, Musson Recycled Rubber Pavers are the smart solution for demanding outdoor applications. Pavers are available in two thicknesses (1-3/4" and 7/8") in Red, Green or Black. Extremely durable and long lasting, Musson Recycled Rubber Pavers provide excellent cushioning for both humans and animals alike. Rubber pavers are slip resistant (in wet or dry conditions) and water permeable – they shed water quickly and eliminate standing water. Musson Recycled Rubber Pavers will not crack or chip and have excellent impact and shock absorbing properties. These pavers are also impervious to ice or extreme temperature changes.



Stock No.	Size	Color	Weight
RRP78	7.75" x 6.5" x 7/8"	Black	1.25 lbs. ea.
RRP78	7.75" x 6.5" x 7/8"	Red	1.25 lbs. ea.
RRP78	7.75" x 6.5" x 7/8"	Green	1.25 lbs. ea.
RRP134	7.75" x 6.5" x 1-3/4"	Black	2.6 lbs. ea.
RRP134	7.75" x 6.5" x 1-3/4"	Red	2.6 lbs. ea.
RRP134	7.75" x 6.5" x 1-3/4"	Green	2.6 lbs. ea.

3.4 Blocks per square foot

SUPERSCAPE IMPRESSIONS – ALL RUBBER LOGO MATS



This all rubber, anti-static, UV, oil and chemical resistant logo mat is excellent for both outdoor and indoor applications. The raised circles give great traction while effectively removing and trapping dirt, grime and water from shoes.

Improved photographic quality images have unlimited colors and offer excellent tones and shades with unparalleled detail and clarity.

Superscape Impressions mats are produced by molding a digitally printed thermo-plastic material into durable Nitrile rubber that will not crack or curl.

Mat Size	Maximum Logo Size	Weight
34" x 29"	20" x 25"	7 lbs.
34" x 54.5"	25" x 48"	13 lbs.
34" x 111"	25" x 96"	26 lbs.
45" x 67.5"	36" x 50"	21 lbs.
45" x 95"	36" x 70"	29 lbs.
68" x 68"	43" x 50"	28 lbs.
68" x 96"	43" x 80"	44 lbs.

Turn your customer's digital image into a custom logo mat for home or business use. No set-up charges; 100% Customer Satisfaction Guarantee.

Circular surface cleats make this mat multi-directional so it effectively scrapes dirt and grime off shoes from all directions.

FINGER SCRAPER MATS



A molded one piece mat of top quality rubber. The cushioning action of this resilient rubber mat makes it an ideal entrance or anti-fatigue mat. beveled edges help minimize tripping. Sculptured back helps prevent movement on floor.

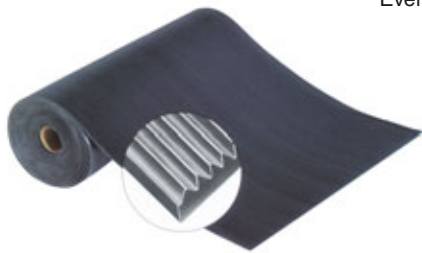


Thousands of flexible finger-wipers brush dirt from footwear with squeegee-like action. Dirt is neatly concealed out of sight in a leak proof tray, is easily removed by shaking or hosing. Sculptured back helps prevent movement.

1/2" thick - Black color only.

Stock No.	Approx. Size	Std. Pack	Weight Per Mat
NFS-232	24" x 32"	1	10 lbs.
NFS-329	32" x 39"	1	17 lbs.
NFS-372	36" x 72"	1	36 lbs.

STANDARD CORRUGATED RUNNER MATTING—All Rubber



Ever popular narrow corrugated surface design.

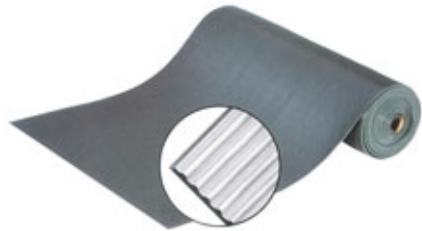
A top quality heavy gauge standard all rubber matting that reduces noise, accidents, fatigue and maintenance. This rotary cured matting has a smooth plate back finish; won't curl, shrink or separate. Good abrasion resistance; sound absorbing, flexible rubber construction stays in place and is slip-resistant.

Stock Number	Color	Roll Size	Approx. Size	Approx. Wt. Lin. Ft.
M1606	Black	75 ft. or 150 ft.	1/8" x 24"	1.7 lbs.
M1601	Black	75 ft. or 150 ft.	1/8" x 36"	2.9 lbs.
M1603	Black	75 ft.	1/8" x 48"	3.4 lbs.
M1605	Black	35 ft.	1/8" x 72"	5.0 lbs.

Available in standard rolls or cut to exact length desired.

EASY SWEEP RIB RUNNER MATTING—Vinyl

GREASE AND OIL RESISTANT—NO FABRIC



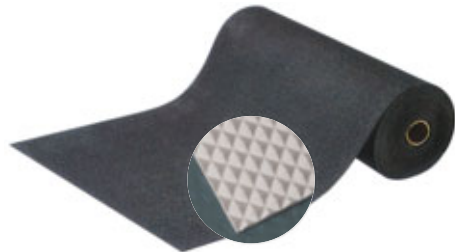
Non-fading superior aging properties make this oil, grease, chemical and stain resistant matting a popular item. Non-combustible; tear, cut, impact and ozone resistant; high tensile strength and elongation properties; single piece rolls. Use inside or outside. Round ribbed corrugations run lengthwise, easily cleaned with soap and water.

Stock Number	Color	Roll Size	Approx. Size	Approx. Wt. Lin. Ft.
M711	Black	105 ft.	1/8" x 24"	1.3 lbs.
M712	Black	105 ft.	1/8" x 36"	2.0 lbs.
M713	Black	105 ft.	1/8" x 48"	2.7 lbs.
M811	Brown	105 ft.	1/8" x 24"	1.3 lbs.
M812	Brown	105 ft.	1/8" x 36"	2.0 lbs.
M813	Brown	105 ft.	1/8" x 48"	2.7 lbs.

Available in standard rolls or cut to exact length desired.

PYRAMID RUNNER MATTING—Vinyl

GREASE AND OIL RESISTANT—NO FABRIC



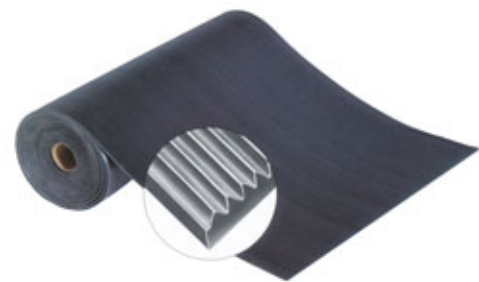
Non-fading, superior aging properties, now in a cross-corrugated pyramid surface; non-directional; resulting in a slip resistant vinyl runner. Resists many oils and greases; non-combustible; tear, cut and impact resistant; ozone resistant; high tensile strength; outwears rubber single piece rolls. Reduce maintenance costs; easily cleaned with soap and water.

Meets flammability requirements of motor vehicle standard #302.

Stock Number	Color	Roll Size	Approx. Size	Approx. Wt. Lin. Ft.
M7736	Black	105 ft.	1/8" x 36"	2.2 lbs.
M7748	Black	105 ft.	1/8" x 48"	3.0 lbs.

Available in standard rolls or cut to exact length desired.

STANDARD CORRUGATED RUNNER MATTING—Heavy Duty Rubber



Top quality all rubber for longer wear and size stability. Its design and compound help reduce noise, fatigue and maintenance; ideal for heavy traffic, stores, factories, warehouses, ramps. The all rubber construction stays in place and is slip resistant. With care, light weight carts can be used over this runner.

Standard narrow corrugated surface for heavy use.

Available in standard rolls or cut to exact length desired

Black color only.

Stock No.	Roll Size	Approx. Size	Approx. Wt. Lin. Ft.
M301	75 ft.	1/4" x 24"	4.0 lbs.
M302	75 ft.	1/4" x 36"	6.0 lbs.
M303	75 ft.	1/4" x 48"	8.0 lbs.
M304	25 ft.	1/4" x 72"	12.0 lbs.

DIAMOND PLATE RUNNER — YELLOW EDGES — Vinyl



A deep embossed steel-deck design vinyl runner with Safety Yellow Borders for high visibility. For walkways, ramps and traffic patterns in factories and commercial buildings. Resists most beverages, oils, common industrial chemicals and cleansers. Stain resistant, flame retardant and self extinguishing. Provides extra safety for walkways. Cleans easily.

Meets flammability requirements of motor vehicle safety test No. 302 (49 CFR 571302).

5/32" thick, Black Color with Safety-Yellow borders on both long edges; or, Plain Black, Plain Gray with no borders.

Stock No.	Approx. Width	Approx. Roll Size	Approx. Lin. Ft.
SDP93	36"	75'	2.0 lbs.
SDP94	48"	75'	3.0 lbs.

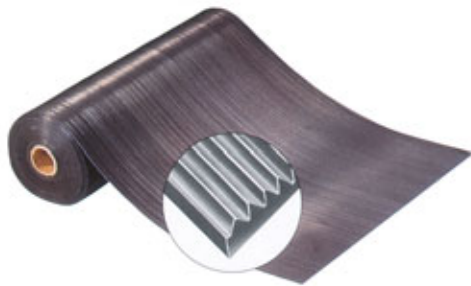


Black



Gray

VINYL SWITCHBOARD RUNNER MATTING



Black top quality standard corrugated surface switchboard matting. All matting is completely tested throughout so it meets ASTM Specifications. Meets: Dielectric Test Volt, RMS AC 30,000; Proof Test Volt, RMS AC 20,000; Recommended Maximum Use Volt, RMS AC 17,000. Conforms to ANSI/ASTM D178 J6.7 Type II, Class 2. (With care, light carts can be rolled over this runner.)

Fully meets ASTM specifications—branded on back.

Black color only.

Available in standard rolls or cut to exact length desired.

Stock No.	Approx. Yds. to Roll	Approx. Size	Approx. Wt. Lin. Ft.
KV256	25	1/4" x 36"	5.0 lbs.

CLEAR VINYL GRIPPER MATTING



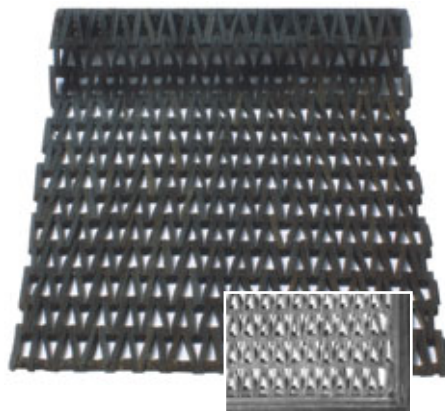
Keep carpeting like new, yet see the colors. Clear Vinyl with molded-in grippers on the underside of each square foot of ribbed area; anchors into most tufted, loop or woven carpets. Stays in position better than smooth back runners. Angular ribbed surface with clear feathered edge border. Wipes clean, heels won't puncture.

For use on commercial, industrial, institutional or residential carpeted floors.

Available in 60 ft. rolls or cut to exact length desired.

Stock No.	Thickness	Std. Roll Size	Approx. Wt. Lin. Ft.
K2700	3/32"	27" x 60 ft.	1.0 lbs.
K3600	1/8"	36" x 60 ft.	1.7 lbs.
K4800	1/8"	48" x 60 ft.	2.2 lbs.

FABRIC-TIRE LINK MATS



A durable herringbone weave design mat of rubberized fabric-tire links. Ideal for schools, industrial or factory entrances; factory or kitchen fatigue mats. Links are 2-3/4" long woven on galvanized steel rods. Wires should run the short dimension; easily rolled for cleaning. Custom made up to 8 ft. wide; Black beveled or Square Nosing available. For exact size mats, nosing must be attached. Recess mats must have square nosing on all four sides.

Approximately 5/8" thick — Natural gray-black color.
Stock Sizes — (No nosing attached.)

Stock No.	Approx. Size	Std. Pkg.	Approx. Wt. Ea.
#3	17" x 25" x 5/8"	12	7 lbs.
#4	20" x 30" x 5/8"	6	9 lbs.
#6	24" x 37" x 5/8"	4	16 lbs.
#10	30" x 48" x 5/8"	3	23 lbs.
#13	30" x 62" x 5/8"	2	29 lbs.
#18	36" x 72" x 5/8"	2	41 lbs.

Custom sizes available with square or beveled nosing up to 8 foot wide x any length; we do not recommend over 72 square feet per section.

DURA-RUG FLUFFED-TIRE LINK MATS



A durable, carpet-like surface of rubberized fabric-tire links; wipes off dust, dirt and moisture. Ideal for schools; industrial or factory entrances; kitchen use; bowling lanes; skating rinks. Use in front of machines, along assembly lines, in aisles. Mats reduce fatigue; allow drainage of liquids; trap dirt; roll up for cleaning. Use for spike shoe traffic in pro shops or locker rooms. Links are 2-1/2" long straight weave design woven on galvanized steel rods. Custom made up to 8 ft. wide; Black beveled or Square Nosing available. For exact size mats, nosing must be attached. Recess mats must have square nosing on all four sides.

Approximately 3/4" thick — Natural gray-black color.
Stock Sizes — (No nosing attached.)

Stock No.	Approx. Size	Std. Pkg.	Approx. Wt. Ea.
403	17" x 25"	12	8 lbs.
404	20" x 30"	6	10 lbs.
406	24" x 37"	4	15 lbs.
410	30" x 48"	3	25 lbs.
413	30" x 62"	2	33 lbs.
418	36" x 72"	2	45 lbs.

Custom sizes available with square or beveled nosing up to 8 foot wide x any length; we do not recommend over 72 square feet per section.



MUSSON RUBBER CO.

P.O. Box 7038 • Akron, OH 44306 • Fax (330) 773-3254

800-321-2381 • E-mail info@mussonrubber.com • www.mussonrubber.com